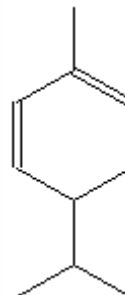


SPECIFICATION SHEET

VERSION	1,00	VERSION DATE	19/09/22	PRINT DATE	17/05/24
PRODUCT	PHELLANDRENE, ALPHA NATURAL EX-GLOBULUS				
APPLICATIONS	Industrial raw material not intended for direct use.				
IUPAC NAME	4-ISOPROPYL-1-METHYL-1,5-CYCLOHEXADIENE				
SYNONYMS	1,5-P-MENTHADIENE, PIVAROSE				
PLANT OF ORIGIN	Eucalyptus globulus				
PART OF THE PLANT	LEAVES AND STEM				
FORMULA	C10 H16				
MOLECULAR WEIGHT	136,00				
CAS	4221-98-1				
CAS 2	99-83-2				
EINECS	224-167-6				
EINECS 2	202-792-5				
TARIFF NUMBER	2902190000				
KOSHER CERTIFICATE	AVAILABLE ON REQUEST				
FOOD GRADE CERTIFICATE	AVAILABLE ON REQUEST				
REACH REGISTRATION NO.	Exempt from registration (imported/manufactured < 1 ton/year)				



SPECIFICATIONS

ASPECT AT 20°C	CLEAR MOBILE LIQUID	
COLOUR	COLORLESS	
ODOUR	CITRUS, LIME, PEPPER, JUNIPER	
TASTE		
DENSITY AT 20°C (g / ml)	0,835	- 0,845
DENSITY 25/25	-	
REFRACTIVE INDEX nD20	1,4650	- 1,4750
REFRACTIVE INDEX nD25	-	
OPTICAL ROTATION (°)	30,00	/ 50,00
BOILING POINT (°C)	173 - 176	
MELTING POINT (°C)		
FLASH POINT (°C)	53,00	
ASSAY (% GC)	> 85	
ACID VALUE (mg KOH/g)	-	
SOLUBILITY	SOLUBLE IN ALCOHOL 90%	
VAPOUR PRESSURE	NOT DETERMINED	
OTHER SOLUBILITIES	SOLUBLE IN ETHANOL	
OTHER TECHNICAL DATA	CIMENE AND OTHER TERPENE HYDROCARBONS: 10-12%.	

STABILITY AND STORAGE

KEEP IN TIGHTLY CLOSED CONTAINER IN A COOL AND DRY PLACE, PROTECTED FROM LIGHT. WHEN STORED FOR MORE THAN 24 MONTHS, QUALITY SHOULD BE CHECKED BEFORE USE.

WE BELIEVE THE ABOVE INFORMATION TO BE CORRECT BUT WE DO NOT PRESENT IT AS ALL INCLUSIVE AND AS SUCH SHOULD BE USED AS A GUIDE. IT IS THE SOLE RESPONSIBILITY OF THE RECEIVER OF OUR PRODUCT TO COMPLY WITH EXISTING REGULATIONS AND INSTRUCTIONS.

THIS PRODUCT HAS NOT BEEN FILTERED DUE TO TECHNICAL REASONS. WE RECOMMEND NOT TO USE IT UNLESS FILTERED WHEN USED AS A RAW MATERIAL IN FOOD INTENDED FOR FINAL CONSUMERS.