

SPECIFICATION SHEET

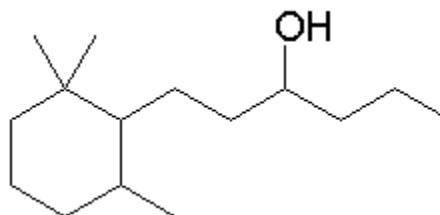
VERSION 4,00 **VERSION DATE** 19/09/22 **PRINT DATE** 18/05/24

PRODUCT WOODAMBER / TIMBEROL
APPLICATIONS Industrial raw material not intended for direct use.
IUPAC NAME 1-(2,2,6-TRIMETHYLCYCLOHEXYL)-HEXAN-3-OL
SYNONYMS 1-(2,2,6-TRIMETHYLCYCLOHEXYL)-HEXAN-3-OL

FORMULA C15 H30 O
MOLECULAR WEIGHT 226,00
CAS 70788-30-6

EINECS 274-892-7

TARIFF NUMBER 2906190090



REACH REGISTRATION NO. 01-2120768938-30

SPECIFICATIONS

ASPECT AT 20°C	CLEAR VISCOUS LIQUID
COLOUR	COLORLESS
ODOUR	AMBER, POWDER, SANDAL, WOODY
TASTE	
DENSITY AT 20°C (g / ml)	0,896 - 0,902
DENSITY 25/25	-
REFRACTIVE INDEX nD20	1,4700 - 1,4760
REFRACTIVE INDEX nD25	-
OPTICAL ROTATION (°)	/
BOILING POINT (°C)	-
MELTING POINT (°C)	-
FLASH POINT (°C)	142,00
ASSAY (% GC)	2 MAIN ISOMERS > 74%; TOTAL SUM ISOMERS > 75%
ACID VALUE (mg KOH/g)	< 1
SOLUBILITY	INSOLUBLE IN WATER; 1:4 IN ETHANOL 80°
VAPOUR PRESSURE	0,001 hPa (20°C)
OTHER SOLUBILITIES	SOLUBLE IN ETHANOL

OTHER TECHNICAL DATA

STABILITY AND STORAGE

KEEP IN TIGHTLY CLOSED CONTAINER IN A COOL AND DRY PLACE, PROTECTED FROM LIGHT. WHEN STORED FOR MORE THAN 24 MONTHS, QUALITY SHOULD BE CHECKED BEFORE USE.

WE BELIEVE THE ABOVE INFORMATION TO BE CORRECT BUT WE DO NOT PRESENT IT AS ALL INCLUSIVE AND AS SUCH SHOULD BE USED AS A GUIDE. IT IS THE SOLE RESPONSIBILITY OF THE RECEIVER OF OUR PRODUCT TO COMPLY WITH EXISTING REGULATIONS AND INSTRUCTIONS.