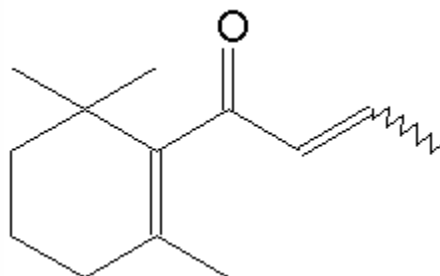


SPECIFICATION SHEET

VERSION 6,00 **VERSION DATE** 05/08/20 **PRINT DATE** 19/05/24

PRODUCT DAMASCONE BETA FIRMENICH 939697 FAB
APPLICATIONS Industrial raw material not intended for direct use.
IUPAC NAME (2E)-1-(2,6,6-TRIMETHYL-1-CYCLOHEXEN-1-YL)-2-BUTEN-1-ONE
SYNONYMS

FORMULA C13 H20 O
MOLECULAR WEIGHT 192,00
CAS 23726-91-2
CAS 2 23726-92-3
EINECS 245-842-1
EINECS 2 245-843-7
FEMA 3243
TARIFF NUMBER 2914290090



FOOD GRADE CERTIFICATE AVAILABLE ON REQUEST
REACH REGISTRATION NO. 01-2120094433-55

SPECIFICATIONS

ASPECT AT 20°C	CLEAR MOIBLE LIQUID	
COLOUR	COLORLESS TO PALE YELLOW	
ODOUR	FRUITY, FLORAL, INTENSE, PLUM, ROSE	
TASTE		
DENSITY AT 20°C (g / ml)	0,932	- 0,940
DENSITY 25/25	0,931	- 0,939
REFRACTIVE INDEX nD20	1,4960	- 1,5000
REFRACTIVE INDEX nD25	1,4940	- 1,4980
OPTICAL ROTATION (°)	/	
BOILING POINT (°C)	-	
MELTING POINT (°C)	-	
FLASH POINT (°C)	110,00	
ASSAY (% GC)	CIS 1-6%; TRANS 89-96%; CIS+TRANS >95%	
ACID VALUE (mg KOH/g)	< 1	
SOLUBILITY	INSOLUBLE IN WATER	
VAPOUR PRESSURE	NOT DETERMINED	
OTHER SOLUBILITIES	SOLUBLE IN ETHANOL	

OTHER TECHNICAL DATA

STABILITY AND STORAGE

KEEP IN TIGHTLY CLOSED CONTAINER IN A COOL AND DRY PLACE, PROTECTED FROM LIGHT. WHEN STORED FOR MORE THAN 24 MONTHS, QUALITY SHOULD BE CHECKED BEFORE USE.
 PURGE HEADSPACE WITH NITROGEN.

WE BELIEVE THE ABOVE INFORMATION TO BE CORRECT BUT WE DO NOT PRESENT IT AS ALL INCLUSIVE AND AS SUCH SHOULD BE USED AS A GUIDE.
 IT IS THE SOLE RESPONSIBILITY OF THE RECEIVER OF OUR PRODUCT TO COMPLY WITH EXISTING REGULATIONS AND INSTRUCTIONS.

THIS PRODUCT HAS NOT BEEN FILTERED DUE TO TECHNICAL REASONS. WE RECOMMEND NOT TO USE IT UNLESS FILTERED WHEN USED AS A RAW MATERIAL IN FOOD INTENDED FOR FINAL CONSUMERS.