

SPECIFICATION SHEET

VERSION 4,00 **VERSION DATE** 19/09/22 **PRINT DATE** 17/05/24

PRODUCT LIMONENE-D RECTIFIED NATURAL
APPLICATIONS Industrial raw material not intended for direct use.
IUPAC NAME D-LIMONENE
SYNONYMS

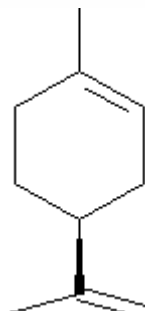
PLANT OF ORIGIN Citrus sinensis
PART OF THE PLANT FRUIT PEELS
FORMULA C₁₀ H₁₆
MOLECULAR WEIGHT 136,00
CAS 5989-27-5

EINECS 227-813-5

FEMA 2633
TARIFF NUMBER 2902190000

FOOD GRADE CERTIFICATE AVAILABLE ON REQUEST

REACH REGISTRATION NO. 01-2119529223-47



SPECIFICATIONS

ASPECT AT 20°C CLEAR MOBILE LIQUID
COLOUR COLORLESS TO PALE YELLOW
ODOUR CITRUS, SMOOTH
TASTE
DENSITY AT 20°C (g / ml) 0,838 - 0,880
DENSITY 25/25 -
REFRACTIVE INDEX n_{D20} 1,4700 - 1,4750
REFRACTIVE INDEX n_{D25} -
OPTICAL ROTATION (°) 90,00 / 105,00
BOILING POINT (°C) 178
MELTING POINT (°C) -97 APPROX.
FLASH POINT (°C) 53,00
ASSAY (% GC) > 98
ACID VALUE (mg KOH/g) -
SOLUBILITY INSOLUBLE IN WATER
VAPOUR PRESSURE NOT DETERMINED
OTHER SOLUBILITIES SOLUBLE IN ETHANOL. SOLUBILITY 1/6 v/v IN ETHANOL 90° AT 25°C

OTHER TECHNICAL DATA PEROXIDE INDEX < 20 mmol/L

STABILITY AND STORAGE

KEEP IN TIGHTLY CLOSED CONTAINER IN A COOL AND DRY PLACE, PROTECTED FROM LIGHT. WHEN STORED FOR MORE THAN 24 MONTHS, QUALITY SHOULD BE CHECKED BEFORE USE.
PURGE HEADSPACE WITH NITROGEN.

WE BELIEVE THE ABOVE INFORMATION TO BE CORRECT BUT WE DO NOT PRESENT IT AS ALL INCLUSIVE AND AS SUCH SHOULD BE USED AS A GUIDE.
IT IS THE SOLE RESPONSIBILITY OF THE RECEIVER OF OUR PRODUCT TO COMPLY WITH EXISTING REGULATIONS AND INSTRUCTIONS.

THIS PRODUCT HAS NOT BEEN FILTERED DUE TO TECHNICAL REASONS. WE RECOMMEND NOT TO USE IT UNLESS FILTERED WHEN USED AS A RAW MATERIAL IN FOOD INTENDED FOR FINAL CONSUMERS.