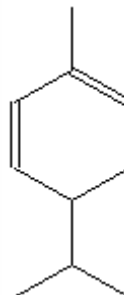


SPECIFICATION SHEET

VERSION 4,00 **VERSION DATE** 18/08/23 **PRINT DATE** 17/05/24

PRODUCT	PHELLANDRENE, ALPHA NATURAL EX-DIVES
APPLICATIONS	Industrial raw material not intended for direct use.
IUPAC NAME	4-ISOPROPYL-1-METHYL-1,5-CYCLOHEXADIENE
SYNONYMS	1,5-P-MENTHADIENE, PIVAROSE
PLANT OF ORIGIN	Eucalyptus dives
PART OF THE PLANT	LEAVES AND STEM
FORMULA	C10 H16
MOLECULAR WEIGHT	136,00
CAS	4221-98-1
CAS 2	99-83-2
EINECS	224-167-6
EINECS 2	202-792-5
FEMA	2856
TARIFF NUMBER	2902190000
KOSHER CERTIFICATE	AVAILABLE ON REQUEST
FOOD GRADE CERTIFICATE	AVAILABLE ON REQUEST
REACH REGISTRATION NO.	01-2120768949-27



SPECIFICATIONS

ASPECT AT 20°C	CLEAR MOBILE LIQUID
COLOUR	COLORLESS
ODOUR	CITRUS, LIME, PEPPER, JUNIPER
TASTE	
DENSITY AT 20°C (g / ml)	0,835 - 0,842
DENSITY 25/25	0,832 - 0,840
REFRACTIVE INDEX nD20	1,4700 - 1,4750
REFRACTIVE INDEX nD25	-
OPTICAL ROTATION (°)	-170,00 / -145,00
BOILING POINT (°C)	173 - 176
MELTING POINT (°C)	
FLASH POINT (°C)	53,00
ASSAY (% GC)	> 85
ACID VALUE (mg KOH/g)	-
SOLUBILITY	SOLUBLE IN ALCOHOL 90%
VAPOUR PRESSURE	NOT DETERMINED
OTHER SOLUBILITIES	SOLUBLE IN ETHANOL
OTHER TECHNICAL DATA	CIMENE AND OTHER TERPENE HYDROCARBONS: 10-12%.

STABILITY AND STORAGE

KEEP IN TIGHTLY CLOSED CONTAINER IN A COOL AND DRY PLACE, PROTECTED FROM LIGHT. WHEN STORED FOR MORE THAN 24 MONTHS, QUALITY SHOULD BE CHECKED BEFORE USE.

WE BELIEVE THE ABOVE INFORMATION TO BE CORRECT BUT WE DO NOT PRESENT IT AS ALL INCLUSIVE AND AS SUCH SHOULD BE USED AS A GUIDE. IT IS THE SOLE RESPONSIBILITY OF THE RECEIVER OF OUR PRODUCT TO COMPLY WITH EXISTING REGULATIONS AND INSTRUCTIONS.

THIS PRODUCT HAS NOT BEEN FILTERED DUE TO TECHNICAL REASONS. WE RECOMMEND NOT TO USE IT UNLESS FILTERED WHEN USED AS A RAW MATERIAL IN FOOD INTENDED FOR FINAL CONSUMERS.