

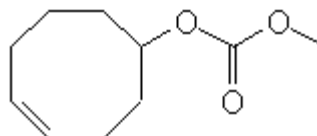
SPECIFICATION SHEET

VERSION 5,00 **VERSION DATE** 30/03/23 **PRINT DATE** 18/05/24

PRODUCT VIOLIFF IFF
APPLICATIONS Industrial raw material not intended for direct use.
IUPAC NAME METHOXYCARBONYLOXYCYCLOOCT-4-ENE
SYNONYMS VIOLET T

FORMULA C10 H16 O3
MOLECULAR WEIGHT 184,20
CAS 87731-18-8

EINECS 401-620-8



TARIFF NUMBER 2920901090
KOSHER CERTIFICATE AVAILABLE ON REQUEST

REACH REGISTRATION NO. 01-0000015147-73, 01-2120058008-60

SPECIFICATIONS

ASPECT AT 20°C	CLEAR MOBILE LIQUID
COLOUR	COLORLESS TO PALE YELLOW
ODOUR	FLORAL, VIOLET, BANANA
TASTE	
DENSITY AT 20°C (g / ml)	1,056 - 1,064
DENSITY 25/25	1,055 - 1,063
REFRACTIVE INDEX nD20	1,4630 - 1,4690
REFRACTIVE INDEX nD25	-
OPTICAL ROTATION (°)	/
BOILING POINT (°C)	-
MELTING POINT (°C)	-
FLASH POINT (°C)	94,00
ASSAY (% GC)	MAIN PEAK 65-75%
ACID VALUE (mg KOH/g)	
SOLUBILITY	INSOLUBLE IN WATER; SOLUBLE IN ETHANOL
VAPOUR PRESSURE	NOT DETERMINED
OTHER SOLUBILITIES	SOLUBLE IN ETHANOL

OTHER TECHNICAL DATA Peak 1 1-8%; Peak 2 7-20%; Peak 3 <7%; Peak 5 4-10%

STABILITY AND STORAGE

KEEP IN TIGHTLY CLOSED CONTAINER IN A COOL AND DRY PLACE, PROTECTED FROM LIGHT. WHEN STORED FOR MORE THAN 24 MONTHS, QUALITY SHOULD BE CHECKED BEFORE USE.
IT CONTAINS 0,1% OF TOCOPHEROL

WE BELIEVE THE ABOVE INFORMATION TO BE CORRECT BUT WE DO NOT PRESENT IT AS ALL INCLUSIVE AND AS SUCH SHOULD BE USED AS A GUIDE.
IT IS THE SOLE RESPONSIBILITY OF THE RECEIVER OF OUR PRODUCT TO COMPLY WITH EXISTING REGULATIONS AND INSTRUCTIONS.