

SPECIFICATION SHEET

VERSION 2,00 **VERSION DATE** 11/10/22 **PRINT DATE** 04/05/24

PRODUCT ISOAMYL PHENYLACETATE BIONATURAL
APPLICATIONS Industrial raw material not intended for direct use.
IUPAC NAME ISOPENTYL 2-PHENYLACETATE
SYNONYMS ISOAMYL ALPHA-TOLUATE

PLANT OF ORIGIN
PART OF THE PLANT
FORMULA
MOLECULAR WEIGHT
CAS

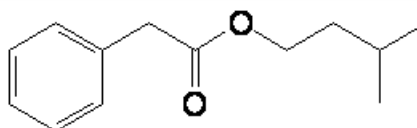
C₁₃ H₁₈ O₂
206,00
102-19-2

EINECS

203-012-6

FEMA
TARIFF NUMBER

2081
2916391000



REACH REGISTRATION NO. On request. REACH and non-REACH material available for this product.

SPECIFICATIONS

ASPECT AT 20°C	CLEAR MOBILE LIQUID
COLOUR	COLORLESS TO PALE YELLOW
ODOUR	SWEET, TENACIOUS, MUSKY, FRUITY, BALSAM
TASTE	BALSAMIC, COCOA, HONEY
DENSITY AT 20°C (g / ml)	0,975 - 0,981
DENSITY 25/25	-
REFRACTIVE INDEX n_{D20}	1,4820 - 1,4920
REFRACTIVE INDEX n_{D25}	-
OPTICAL ROTATION (°)	/
BOILING POINT (°C)	268°C
MELTING POINT (°C)	-
FLASH POINT (°C)	103,00
ASSAY (% GC)	SUM OF ISOMERS > 98
ACID VALUE (mg KOH/g)	< 1
SOLUBILITY	INSOLUBLE IN WATER
VAPOUR PRESSURE	NOT DETERMINED
OTHER SOLUBILITIES	1:1 IN ALCOHOL 95°

OTHER TECHNICAL DATA

MAIN ISOMER: ISOAMYL PHENYLACETATE (3-METHYLBUTYL PHENYLACETATE, 80-95% APPROX.). SECONDARY ISOMER: 2-METHYLBUTYL PHENYLACETATE (5-20% APPROX.).

STABILITY AND STORAGE

KEEP IN TIGHTLY CLOSED CONTAINER IN A COOL AND DRY PLACE, PROTECTED FROM LIGHT. WHEN STORED FOR MORE THAN 24 MONTHS, QUALITY SHOULD BE CHECKED BEFORE USE.

WE BELIEVE THE ABOVE INFORMATION TO BE CORRECT BUT WE DO NOT PRESENT IT AS ALL INCLUSIVE AND AS SUCH SHOULD BE USED AS A GUIDE. IT IS THE SOLE RESPONSIBILITY OF THE RECEIVER OF OUR PRODUCT TO COMPLY WITH EXISTING REGULATIONS AND INSTRUCTIONS.

THIS PRODUCT HAS NOT BEEN FILTERED DUE TO TECHNICAL REASONS. WE RECOMMEND NOT TO USE IT UNLESS FILTERED WHEN USED AS A RAW MATERIAL IN FOOD INTENDED FOR FINAL CONSUMERS.