

SPECIFICATION SHEET

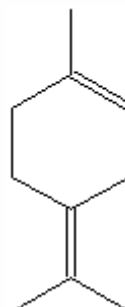
VERSION 5,00 **VERSION DATE** 19/09/22 **PRINT DATE** 03/05/24

PRODUCT TERPINOLENE 20 IFF
APPLICATIONS Industrial raw material not intended for direct use.
IUPAC NAME MULTICOMPONENTS
SYNONYMS

FORMULA
MOLECULAR WEIGHT 0,00
CAS -

EINECS -

TARIFF NUMBER 3302909000



REACH REGISTRATION NO. All the ingredients of the mixture have been registered or they are exempt from registration.

SPECIFICATIONS

ASPECT AT 20°C	CLEAR MOBILE LIQUID
COLOUR	COLORLESS TO PALE YELLOW
ODOUR	PINUS, CITRUS
TASTE	
DENSITY AT 20°C (g / ml)	0,854 - 0,870
DENSITY 25/25	0,853 - 0,869
REFRACTIVE INDEX n_D20	1,4676 - 1,4756
REFRACTIVE INDEX n_D25	-
OPTICAL ROTATION (°)	/
BOILING POINT (°C)	165 (760 mm Hg)
MELTING POINT (°C)	-
FLASH POINT (°C)	46,00
ASSAY (% GC)	TERPINOLENE 19-22;SUM ALCOHOLS<2;LIMONENE 28-48
ACID VALUE (mg KOH/g)	
SOLUBILITY	SOLUBILITY IN WATER < 1%
VAPOUR PRESSURE	2,4 hPa (CALCULATED)
OTHER SOLUBILITIES	SOLUBLE IN ETHANOL

OTHER TECHNICAL DATA

STABILITY AND STORAGE

KEEP IN TIGHTLY CLOSED CONTAINER IN A COOL AND DRY PLACE, PROTECTED FROM LIGHT. WHEN STORED FOR MORE THAN 24 MONTHS, QUALITY SHOULD BE CHECKED BEFORE USE.
PURGE HEADSPACE WITH NITROGEN.

WE BELIEVE THE ABOVE INFORMATION TO BE CORRECT BUT WE DO NOT PRESENT IT AS ALL INCLUSIVE AND AS SUCH SHOULD BE USED AS A GUIDE.
IT IS THE SOLE RESPONSIBILITY OF THE RECEIVER OF OUR PRODUCT TO COMPLY WITH EXISTING REGULATIONS AND INSTRUCTIONS.