

## SPECIFICATION SHEET

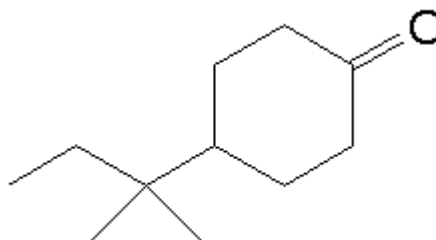
**VERSION** 3,00 **VERSION DATE** 19/09/22 **PRINT DATE** 18/05/24

**PRODUCT** ORIVONE IFF  
**APPLICATIONS** Industrial raw material not intended for direct use.  
**IUPAC NAME** 4-TERTIARYPENTYL CYCLOHEXANONE  
**SYNONYMS** 4-TERTIARY-PENTYL CYCLOHEXANONE

**FORMULA** C11 H20 O  
**MOLECULAR WEIGHT** 168,00  
**CAS** 16587-71-6

**EINECS** 240-642-0

**TARIFF NUMBER** 2914290090



**REACH REGISTRATION NO.** 01-2120762757-40

## SPECIFICATIONS

|                                 |   |
|---------------------------------|---|
| <b>ASPECT AT 20°C</b>           | CLEAR MOBILE LIQUID                                 |
| <b>COLOUR</b>                   | COLORLESS   |
| <b>ODOUR</b>                    | WOODY, ORRIS, CAMPHORACEOUS                         |
| <b>TASTE</b>                    |   |
| <b>DENSITY AT 20°C (g / ml)</b> | 0,919 - 0,927                                       |
| <b>DENSITY 25/25</b>            | 0,918 - 0,926                                       |
| <b>REFRACTIVE INDEX nD20</b>    | 1,4650 - 1,4710                                     |
| <b>REFRACTIVE INDEX nD25</b>    | -   |
| <b>OPTICAL ROTATION (°)</b>     | /   |
| <b>BOILING POINT (°C)</b>       | -   |
| <b>MELTING POINT (°C)</b>       |   |
| <b>FLASH POINT (°C)</b>         | 94,00   |
| <b>ASSAY (% GC)</b>             | ORIVONE >92; T-AMYL CYCLOHEXANOL <6; PENTAPHEN <0,1 |
| <b>ACID VALUE (mg KOH/g)</b>    | -   |
| <b>SOLUBILITY</b>               | INSOLUBLE IN WATER                                  |
| <b>VAPOUR PRESSURE</b>          | 0,0042 calculated (kPa)                             |
| <b>OTHER SOLUBILITIES</b>       | SOLUBLE IN ETHANOL                                  |

## OTHER TECHNICAL DATA

## STABILITY AND STORAGE

KEEP IN TIGHTLY CLOSED CONTAINER IN A COOL AND DRY PLACE, PROTECTED FROM LIGHT. WHEN STORED FOR MORE THAN 24 MONTHS, QUALITY SHOULD BE CHECKED BEFORE USE.  
 STABILIZED WITH 0,1% STABILIFF. STORAGE TEMPERATURE RECOMMENDED: AMBIENT (5-45°C)

WE BELIEVE THE ABOVE INFORMATION TO BE CORRECT BUT WE DO NOT PRESENT IT AS ALL INCLUSIVE AND AS SUCH SHOULD BE USED AS A GUIDE.  
 IT IS THE SOLE RESPONSIBILITY OF THE RECEIVER OF OUR PRODUCT TO COMPLY WITH EXISTING REGULATIONS AND INSTRUCTIONS.