

SPECIFICATION SHEET

VERSION 1,00 **VERSION DATE** 19/09/22 **PRINT DATE** 16/08/24

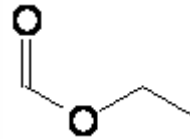
PRODUCT ETHYL FORMATE, NATURAL
APPLICATIONS Industrial raw material not intended for direct use.
IUPAC NAME ETHYL METHANOATE
SYNONYMS METANOATO DE ETILO

PLANT OF ORIGIN
PART OF THE PLANT

FORMULA C3 H6 O2
MOLECULAR WEIGHT 74,09
CAS 109-94-4

EINECS 203-721-0

FEMA 2434
TARIFF NUMBER 2915130090



FOOD GRADE CERTIFICATE AVAILABLE ON REQUEST
REACH REGISTRATION NO. On request. REACH and non-REACH material available for this product.

SPECIFICATIONS

ASPECT AT 20°C	CLEAR MOBILE LIQUID
COLOUR	COLORLESS
ODOUR	FRUITY, RUM, STRONG, ETHEREAL
TASTE	SWEET, RUM, FRUITY, BAKED FRUIT, WHISKY
DENSITY AT 20°C (g / ml)	0,918 - 0,925
DENSITY 25/25	0,916 - 0,921
REFRACTIVE INDEX nD20	1,3590 - 1,3630
REFRACTIVE INDEX nD25	-
OPTICAL ROTATION (°)	/
BOILING POINT (°C)	53 - 55
MELTING POINT (°C)	-80
FLASH POINT (°C)	-19,00
ASSAY (% GC)	> 95
ACID VALUE (mg KOH/g)	<0,2% HFor IODOMETRY
SOLUBILITY	SOLUBILITY IN WATER 110 g/L (18°C)
VAPOUR PRESSURE	265,0 mbar (20°C)
OTHER SOLUBILITIES	SOLUBLE IN ETHANOL. SOLUBLE IN ETHANOL 50% 1:5. SOLUBLE IN ETHANOL 80% 1:1

OTHER TECHNICAL DATA

STABILITY AND STORAGE

KEEP IN TIGHTLY CLOSED CONTAINER IN A COOL AND DRY PLACE, PROTECTED FROM LIGHT. WHEN STORED FOR MORE THAN 12 MONTHS, QUALITY SHOULD BE CHECKED BEFORE USE.
HIGHLY FLAMMABLE: AVOID HEATING.

WE BELIEVE THE ABOVE INFORMATION TO BE CORRECT BUT WE DO NOT PRESENT IT AS ALL INCLUSIVE AND AS SUCH SHOULD BE USED AS A GUIDE. IT IS THE SOLE RESPONSIBILITY OF THE RECEIVER OF OUR PRODUCT TO COMPLY WITH EXISTING REGULATIONS AND INSTRUCTIONS.

THIS PRODUCT HAS NOT BEEN FILTERED DUE TO TECHNICAL REASONS. WE RECOMMEND NOT TO USE IT UNLESS FILTERED WHEN USED AS A RAW MATERIAL IN FOOD INTENDED FOR FINAL CONSUMERS.