

SPECIFICATION SHEET

VERSION 2,00 **VERSION DATE** 26/05/21 **PRINT DATE** 17/07/24

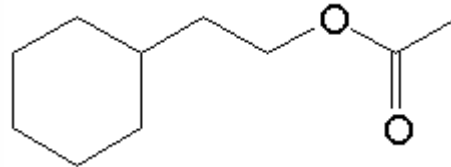
PRODUCT CYCLOHEXYL ETHYL ACETATE IFF
APPLICATIONS Industrial raw material not intended for direct use.
IUPAC NAME CYCLOHEXYL ETHYL ACETATE
SYNONYMS CYCLOHEXANETHANYL ACETATE, LAVANDONAT

FORMULA C10 H18 O2
MOLECULAR WEIGHT 170,00
CAS 21722-83-8

EINECS 244-543-3

TARIFF NUMBER 2915390090

REACH REGISTRATION NO. 01-2120786926-33



SPECIFICATIONS

ASPECT AT 20°C	CLEAR MOBILE LIQUID
COLOUR	COLORLESS
ODOUR	FRUITY, SWEET, CANDY
TASTE	
DENSITY AT 20°C (g / ml)	0,946 - 0,952
DENSITY 25/25	-
REFRACTIVE INDEX nD20	1,4450 - 1,4490
REFRACTIVE INDEX nD25	-
OPTICAL ROTATION (°)	/
BOILING POINT (°C)	-
MELTING POINT (°C)	
FLASH POINT (°C)	79,00
ASSAY (% GC)	> 98
ACID VALUE (mg KOH/g)	-
SOLUBILITY	INSOLUBLE IN WATER
VAPOUR PRESSURE	0,0115 calc. (kPa)
OTHER SOLUBILITIES	SOLUBLE IN ETHANOL

OTHER TECHNICAL DATA

STABILITY AND STORAGE

KEEP IN TIGHTLY CLOSED CONTAINER IN A COOL AND DRY PLACE, PROTECTED FROM LIGHT. WHEN STORED FOR MORE THAN 24 MONTHS, QUALITY SHOULD BE CHECKED BEFORE USE.

WE BELIEVE THE ABOVE INFORMATION TO BE CORRECT BUT WE DO NOT PRESENT IT AS ALL INCLUSIVE AND AS SUCH SHOULD BE USED AS A GUIDE. IT IS THE SOLE RESPONSIBILITY OF THE RECEIVER OF OUR PRODUCT TO COMPLY WITH EXISTING REGULATIONS AND INSTRUCTIONS.