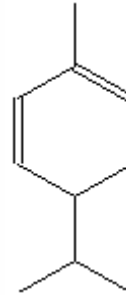


SPECIFICATION SHEET

VERSION 4,00 **VERSION DATE** 18/08/23 **PRINT DATE** 17/07/24

PRODUCT PHELLANDRENE, ALPHA NATURAL EX-DIVES
APPLICATIONS Industrial raw material not intended for direct use.
IUPAC NAME 4-ISOPROPYL-1-METHYL-1,5-CYCLOHEXADIENE
SYNONYMS 1,5-P-MENTHADIENE, PIVAROSE

PLANT OF ORIGIN Eucalyptus dives
PART OF THE PLANT LEAVES AND STEM
FORMULA C10 H16
MOLECULAR WEIGHT 136,00
CAS 4221-98-1
CAS 2 99-83-2
EINECS 224-167-6
EINECS 2 202-792-5
FEMA 2856
TARIFF NUMBER 2902190000
KOSHER CERTIFICATE AVAILABLE ON REQUEST
FOOD GRADE CERTIFICATE AVAILABLE ON REQUEST
REACH REGISTRATION NO. 01-2120768949-27



SPECIFICATIONS

ASPECT AT 20°C CLEAR MOBILE LIQUID
COLOUR COLORLESS
ODOUR CITRUS, LIME, PEPPER, JUNIPER
TASTE

DENSITY AT 20°C (g / ml) 0,835 - 0,842
DENSITY 25/25 0,832 - 0,840
REFRACTIVE INDEX nD20 1,4700 - 1,4750
REFRACTIVE INDEX nD25 -
OPTICAL ROTATION (°) -170,00 / -145,00
BOILING POINT (°C) 173 - 176
MELTING POINT (°C)
FLASH POINT (°C) 53,00
ASSAY (% GC) > 85
ACID VALUE (mg KOH/g) -
SOLUBILITY SOLUBLE IN ALCOHOL 90%
VAPOUR PRESSURE NOT DETERMINED
OTHER SOLUBILITIES SOLUBLE IN ETHANOL

OTHER TECHNICAL DATA CIMENE AND OTHER TERPENE HYDROCARBONS: 10-12%.

STABILITY AND STORAGE

KEEP IN TIGHTLY CLOSED CONTAINER IN A COOL AND DRY PLACE, PROTECTED FROM LIGHT. WHEN STORED FOR MORE THAN 24 MONTHS, QUALITY SHOULD BE CHECKED BEFORE USE.

WE BELIEVE THE ABOVE INFORMATION TO BE CORRECT BUT WE DO NOT PRESENT IT AS ALL INCLUSIVE AND AS SUCH SHOULD BE USED AS A GUIDE. IT IS THE SOLE RESPONSIBILITY OF THE RECEIVER OF OUR PRODUCT TO COMPLY WITH EXISTING REGULATIONS AND INSTRUCTIONS.

THIS PRODUCT HAS NOT BEEN FILTERED DUE TO TECHNICAL REASONS. WE RECOMMEND NOT TO USE IT UNLESS FILTERED WHEN USED AS A RAW MATERIAL IN FOOD INTENDED FOR FINAL CONSUMERS.