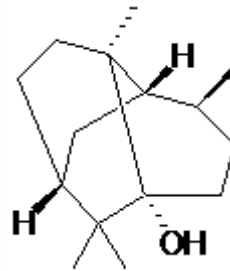


SPECIFICATION SHEET

VERSION 1,00 **VERSION DATE** 19/09/22 **PRINT DATE** 17/07/24

PRODUCT PATCHOULOL
APPLICATIONS Industrial raw material not intended for direct use.
IUPAC NAME PATCHOULOL
SYNONYMS
PLANT OF ORIGIN Pogostemon Cablin Benth
PART OF THE PLANT LEAVES
FORMULA
MOLECULAR WEIGHT 0,00
CAS 5986-55-0
CAS 2 --
EINECS 227-807-2
FEMA -
TARIFF NUMBER 2906190090



REACH REGISTRATION NO. Exempt from registration (imported/manufactured < 1 ton/year)

SPECIFICATIONS

| | |
|---------------------------------|-------------------------------|
| ASPECT AT 20°C | POWDER/CRISTALS |
| COLOUR | WHITE |
| ODOUR | SWEET, FLORAL, WOODY, POWDERY |
| TASTE | |
| DENSITY AT 20°C (g / ml) | - |
| DENSITY 25/25 | - |
| REFRACTIVE INDEX nD20 | - |
| REFRACTIVE INDEX nD25 | - |
| OPTICAL ROTATION (°) | / |
| BOILING POINT (°C) | - |
| MELTING POINT (°C) | |
| FLASH POINT (°C) | 110,00 |
| ASSAY (% GC) | > 99% |
| ACID VALUE (mg KOH/g) | |
| SOLUBILITY | INSOLUBLE IN WATER |
| VAPOUR PRESSURE | NOT DETERMINED |
| OTHER SOLUBILITIES | SOLUBLE IN ETHANOL |

OTHER TECHNICAL DATA

STABILITY AND STORAGE

KEEP IN TIGHTLY CLOSED CONTAINER IN A COOL AND DRY PLACE, PROTECTED FROM LIGHT. WHEN STORED FOR MORE THAN 24 MONTHS, QUALITY SHOULD BE CHECKED BEFORE USE.

WE BELIEVE THE ABOVE INFORMATION TO BE CORRECT BUT WE DO NOT PRESENT IT AS ALL INCLUSIVE AND AS SUCH SHOULD BE USED AS A GUIDE. IT IS THE SOLE RESPONSIBILITY OF THE RECEIVER OF OUR PRODUCT TO COMPLY WITH EXISTING REGULATIONS AND INSTRUCTIONS.