

## SPECIFICATION SHEET

**VERSION** 1,00 **VERSION DATE** 19/09/22 **PRINT DATE** 17/07/24

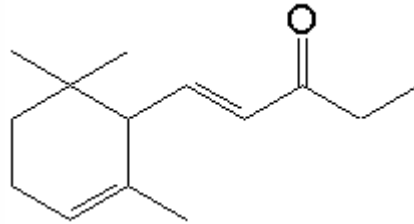
**PRODUCT** METHYL IONONE ALPHA EXTRA BHT IFF  
**APPLICATIONS** Industrial raw material not intended for direct use.  
**IUPAC NAME** 1-(2,6,6-TRIMETHYL-2-CYCLOHEXEN-1-YL)PENT-1-EN-3-ONE  
**SYNONYMS**

**FORMULA** C14 H22 O  
**MOLECULAR WEIGHT** 206,20  
**CAS** 7779-30-8

**EINECS** 231-926-5

**TARIFF NUMBER** 2914230000

**REACH REGISTRATION NO.** 01-2120769663-42



## SPECIFICATIONS

|                                 |  |
|---------------------------------|--|
| <b>ASPECT AT 20°C</b>           | CLEAR MOBILE LIQUID                                |
| <b>COLOUR</b>                   | PALE YELLOW  |
| <b>ODOUR</b>                    | WOODY, VIOLET, FLORAL                              |
| <b>TASTE</b>                    |  |
| <b>DENSITY AT 20°C (g / ml)</b> | 0,925 - 0,931                                      |
| <b>DENSITY 25/25</b>            | -  |
| <b>REFRACTIVE INDEX nD20</b>    | 1,4980 - 1,5020                                    |
| <b>REFRACTIVE INDEX nD25</b>    | -  |
| <b>OPTICAL ROTATION (°)</b>     | /  |
| <b>BOILING POINT (°C)</b>       | -  |
| <b>MELTING POINT (°C)</b>       | -  |
| <b>FLASH POINT (°C)</b>         | 94,00  |
| <b>ASSAY (% GC)</b>             | SUM OF SECTION > 90%. IONONE,N-METHYL ALPHA 65-75% |
| <b>ACID VALUE (mg KOH/g)</b>    | -  |
| <b>SOLUBILITY</b>               | INSOLUBLE IN WATER                                 |
| <b>VAPOUR PRESSURE</b>          | 0,04 hPa (20°C)                                    |
| <b>OTHER SOLUBILITIES</b>       | SOLUBLE IN ETHANOL                                 |

## OTHER TECHNICAL DATA

## STABILITY AND STORAGE

KEEP IN TIGHTLY CLOSED CONTAINER IN A COOL AND DRY PLACE, PROTECTED FROM LIGHT. WHEN STORED FOR MORE THAN 24 MONTHS, QUALITY SHOULD BE CHECKED BEFORE USE.  
CONTAINS 0,1% BHT

WE BELIEVE THE ABOVE INFORMATION TO BE CORRECT BUT WE DO NOT PRESENT IT AS ALL INCLUSIVE AND AS SUCH SHOULD BE USED AS A GUIDE. IT IS THE SOLE RESPONSIBILITY OF THE RECEIVER OF OUR PRODUCT TO COMPLY WITH EXISTING REGULATIONS AND INSTRUCTIONS.