

## SPECIFICATION SHEET

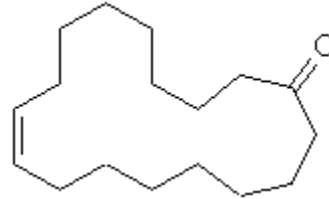
**VERSION** 4,00 **VERSION DATE** 19/09/22 **PRINT DATE** 16/08/24

**PRODUCT** CIVETTONE  
**APPLICATIONS** Industrial raw material not intended for direct use.  
**IUPAC NAME** (Z)-CYCLOHEPTADECA-9-EN-1-ONE  
**SYNONYMS** 9-CYCLOHEPTADECEN-1-ONE, (Z)-

**FORMULA** C17 H30 O  
**MOLECULAR WEIGHT** 250,00  
**CAS** 542-46-1

**EINECS** 208-813-4

**FEMA** 3425  
**TARIFF NUMBER** 2914290090  
**KOSHER CERTIFICATE** AVAILABLE ON REQUEST



**REACH REGISTRATION NO.** Exempt from registration (imported/manufactured < 1 ton/year)

## SPECIFICATIONS

<b>ASPECT AT 20°C</b>	CLEAR MOBILE LIQUID / SOLID
<b>COLOUR</b>	COLORLESS TO PALE YELLOW
<b>ODOUR</b>	WARM SENSOUS ANIMAL AND MUSKY NOTE
<b>TASTE</b>	
<b>DENSITY AT 20°C (g / ml)</b>	-
<b>DENSITY 25/25</b>	-
<b>REFRACTIVE INDEX nD20</b>	1,4850 - 1,4920
<b>REFRACTIVE INDEX nD25</b>	1,4830 - 1,4900
<b>OPTICAL ROTATION (°)</b>	/
<b>BOILING POINT (°C)</b>	-
<b>MELTING POINT (°C)</b>	-
<b>FLASH POINT (°C)</b>	101,00
<b>ASSAY (% GC)</b>	> 88
<b>ACID VALUE (mg KOH/g)</b>	< 1
<b>SOLUBILITY</b>	SOLUBLE IN ETHANOL 95°: 1g in 10ml
<b>VAPOUR PRESSURE</b>	NOT DETERMINED
<b>OTHER SOLUBILITIES</b>	SOLUBLE IN ETHANOL

## OTHER TECHNICAL DATA

## STABILITY AND STORAGE

KEEP IN TIGHTLY CLOSED CONTAINER IN A COOL AND DRY PLACE, PROTECTED FROM LIGHT. WHEN STORED FOR MORE THAN 24 MONTHS, QUALITY SHOULD BE CHECKED BEFORE USE.  
IT DOES NOT CONTAIN SOLVENTS NOR STABILIZERS

WE BELIEVE THE ABOVE INFORMATION TO BE CORRECT BUT WE DO NOT PRESENT IT AS ALL INCLUSIVE AND AS SUCH SHOULD BE USED AS A GUIDE.  
IT IS THE SOLE RESPONSIBILITY OF THE RECEIVER OF OUR PRODUCT TO COMPLY WITH EXISTING REGULATIONS AND INSTRUCTIONS.