

SPECIFICATION SHEET

VERSION 1,00 **VERSION DATE** 19/09/22 **PRINT DATE** 17/07/24

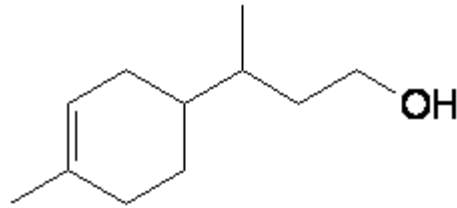
PRODUCT CYCLOMETHYLENE CITRONELLOL
APPLICATIONS Industrial raw material not intended for direct use.
IUPAC NAME GAMMA-4-DIMETHYL-3-CYCLOHEXENE-1-PROPANOL
SYNONYMS 3-(4-METHYL-3-CYCLOHEXENYL)BUTANOL

FORMULA C11 H20 O
MOLECULAR WEIGHT 16.828,00
CAS 15760-18-6

EINECS 239-845-7

TARIFF NUMBER 3302909000

REACH REGISTRATION NO. 01-2120030217-69



SPECIFICATIONS

ASPECT AT 20°C	CLEAR MOBILE LIQUID	
COLOUR	COLORLESS	
ODOUR	FLORAL, SOFT, ROSE, MUGUET	
TASTE		
DENSITY AT 20°C (g / ml)	0,930	- 0,940
DENSITY 25/25	-	
REFRACTIVE INDEX nD20	1,4840	- 1,4880
REFRACTIVE INDEX nD25	-	
OPTICAL ROTATION (°)	/	
BOILING POINT (°C)	-	
MELTING POINT (°C)	-	
FLASH POINT (°C)	101,00	
ASSAY (% GC)	> 98	
ACID VALUE (mg KOH/g)	< 1	
SOLUBILITY	INSOLUBLE IN WATER	
VAPOUR PRESSURE	1,65 Pa AT 20 °C	
OTHER SOLUBILITIES	SOLUBLE IN ETHANOL	

OTHER TECHNICAL DATA

STABILITY AND STORAGE

KEEP IN TIGHTLY CLOSED CONTAINER IN A COOL AND DRY PLACE, PROTECTED FROM LIGHT. WHEN STORED FOR MORE THAN 18 MONTHS, QUALITY SHOULD BE CHECKED BEFORE USE.

WE BELIEVE THE ABOVE INFORMATION TO BE CORRECT BUT WE DO NOT PRESENT IT AS ALL INCLUSIVE AND AS SUCH SHOULD BE USED AS A GUIDE. IT IS THE SOLE RESPONSIBILITY OF THE RECEIVER OF OUR PRODUCT TO COMPLY WITH EXISTING REGULATIONS AND INSTRUCTIONS.