

SPECIFICATION SHEET

VERSION 3,00 **VERSION DATE** 21/05/24 **PRINT DATE** 17/07/24

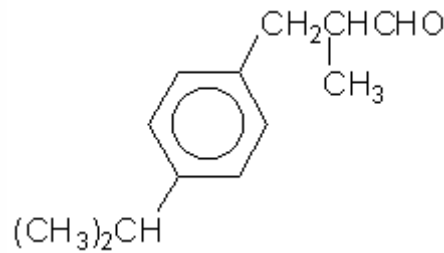
PRODUCT CYCLAMEN ALDEHYDE
APPLICATIONS Industrial raw material not intended for direct use.
IUPAC NAME 2-METHYL-3-(PARA-ISOPROPYLPHENYL)-PROPIONALDEHYDE
SYNONYMS CICLAMAL, CYCLOSAL, CYCLAVIOL

FORMULA C13 H18 O
MOLECULAR WEIGHT 190,28
CAS 103-95-7

EINECS 203-161-7

FEMA 2743
TARIFF NUMBER 2912290090
KOSHER CERTIFICATE AVAILABLE ON REQUEST

REACH REGISTRATION NO. 01-2119970582-32



SPECIFICATIONS

ASPECT AT 20°C CLEAR MOBILE LIQUID
COLOUR COLORLESS TO PALE YELLOW
ODOUR FLORAL, LILY OF THE VALLEY, CYCLAMEN
TASTE
DENSITY AT 20°C (g / ml) 0,946 - 0,950
DENSITY 25/25 0,945 - 0,949
REFRACTIVE INDEX nD20 1,5030 - 1,5070
REFRACTIVE INDEX nD25 1,5010 - 1,5050
OPTICAL ROTATION (°) /
BOILING POINT (°C) 270
MELTING POINT (°C) -
FLASH POINT (°C) 75,00
ASSAY (% GC) > 98,5; CYCLAMEN ALCOHOL < 0,2%
ACID VALUE (mg KOH/g) < 2
SOLUBILITY INSOLUBLE IN WATER
VAPOUR PRESSURE 0,0053 hPa (20°C)
OTHER SOLUBILITIES SOLUBLE IN ETHANOL

OTHER TECHNICAL DATA

STABILITY AND STORAGE

KEEP IN TIGHTLY CLOSED CONTAINER IN A COOL AND DRY PLACE, PROTECTED FROM LIGHT. WHEN STORED FOR MORE THAN 12 MONTHS, QUALITY SHOULD BE CHECKED BEFORE USE.
PURGE HEADSPACE WITH NITROGEN. CONTAINS 0,02% OF ALPHA TOCOPHEROL.

WE BELIEVE THE ABOVE INFORMATION TO BE CORRECT BUT WE DO NOT PRESENT IT AS ALL INCLUSIVE AND AS SUCH SHOULD BE USED AS A GUIDE. IT IS THE SOLE RESPONSIBILITY OF THE RECEIVER OF OUR PRODUCT TO COMPLY WITH EXISTING REGULATIONS AND INSTRUCTIONS.