

SPECIFICATION SHEET

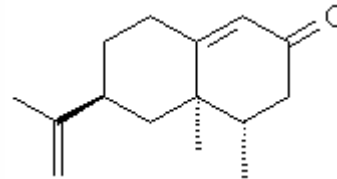
VERSION 1,00 **VERSION DATE** 19/09/22 **PRINT DATE** 16/08/24

PRODUCT NATURAL NOOTKATONE 95% IFF
APPLICATIONS Industrial raw material not intended for direct use.
IUPAC NAME 5,6-DIMETHYL-8-ISO-PROPENYLBI-CYCLO-[4.4.0]-1-DECEN-3-ONE
SYNONYMS

PLANT OF ORIGIN Citrus sinensis
PART OF THE PLANT FRUIT
FORMULA C15 H22 O
MOLECULAR WEIGHT 218,34
CAS 4674-50-4

EINECS 225-124-4

FEMA 3166
TARIFF NUMBER 2914290090
KOSHER CERTIFICATE AVAILABLE ON REQUEST



REACH REGISTRATION NO. Exempt from registration (according to article 2.5 of REACH)

SPECIFICATIONS

ASPECT AT 20°C	CLEAR MOBILE LIQUID/SOLID
COLOUR	YELLOW
ODOUR	GRAPEFRUIT, CITRUS, WOODY
TASTE	
DENSITY AT 20°C (g / ml)	-
DENSITY 25/25	-
REFRACTIVE INDEX nD20	1,5240 - 1,5310
REFRACTIVE INDEX nD25	-
OPTICAL ROTATION (°)	150,00 / 180,00
BOILING POINT (°C)	140°C (0,5-1,0 mm)
MELTING POINT (°C)	-
FLASH POINT (°C)	110,00
ASSAY (% GC)	> 95
ACID VALUE (mg KOH/g)	-
SOLUBILITY	INSOLUBLE IN WATER
VAPOUR PRESSURE	NOT DETERMINED
OTHER SOLUBILITIES	SOLUBLE IN ETHANOL

OTHER TECHNICAL DATA DO NOT HEAT ABOVE 50°C.

STABILITY AND STORAGE

KEEP IN TIGHTLY CLOSED CONTAINER IN A COOL AND DRY PLACE, PROTECTED FROM LIGHT. WHEN STORED FOR MORE THAN 24 MONTHS, QUALITY SHOULD BE CHECKED BEFORE USE.
 MELT AND MIX BEFORE SAMPLING OR USE. KEEP REFRIGERATED. PURGE HEADSPACE WITH NITROGEN.

WE BELIEVE THE ABOVE INFORMATION TO BE CORRECT BUT WE DO NOT PRESENT IT AS ALL INCLUSIVE AND AS SUCH SHOULD BE USED AS A GUIDE. IT IS THE SOLE RESPONSIBILITY OF THE RECEIVER OF OUR PRODUCT TO COMPLY WITH EXISTING REGULATIONS AND INSTRUCTIONS.

THIS PRODUCT HAS NOT BEEN FILTERED DUE TO TECHNICAL REASONS. WE RECOMMEND NOT TO USE IT UNLESS FILTERED WHEN USED AS A RAW MATERIAL IN FOOD INTENDED FOR FINAL CONSUMERS.