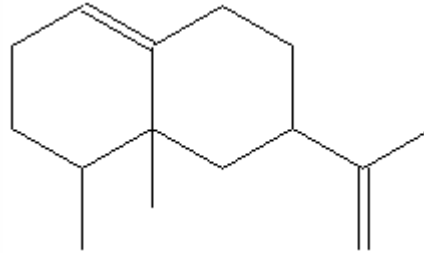


SPECIFICATION SHEET

VERSION 3,00 **VERSION DATE** 19/09/22 **PRINT DATE** 17/07/24

PRODUCT VALENCENE NATURAL 80%
APPLICATIONS Industrial raw material not intended for direct use.
IUPAC NAME 5,6-DIMETHYL-8-ISOPROPENYLBICICLO(4,4,0)3-DECENONE
SYNONYMS VALENCENE

PLANT OF ORIGIN Citrus sinensis L. Osbeck
PART OF THE PLANT FRUIT PEELS
FORMULA C15 H24
MOLECULAR WEIGHT 204,00
CAS 4630-07-3



EINECS 225-047-6

FEMA 3443
TARIFF NUMBER 2902190000

FOOD GRADE CERTIFICATE AVAILABLE ON REQUEST
REACH REGISTRATION NO. Exempt from registration (imported/manufactured < 1 ton/year)

SPECIFICATIONS

| | | |
|---------------------------------|---|----------|
| ASPECT AT 20°C | CLEAR MOBILE LIQUID | |
| COLOUR | FROM COLORLESS TO YELLOW | |
| ODOUR | WOODY, CITRIC, ORANGE-REMINISCENT | |
| TASTE | | |
| DENSITY AT 20°C (g / ml) | 0,913 | - 0,925 |
| DENSITY 25/25 | - | |
| REFRACTIVE INDEX nD20 | 1,4980 | - 1,5100 |
| REFRACTIVE INDEX nD25 | - | |
| OPTICAL ROTATION (°) | 75,00 | / 105,00 |
| BOILING POINT (°C) | - | |
| MELTING POINT (°C) | | |
| FLASH POINT (°C) | 93,00 | |
| ASSAY (% GC) | > 80 | |
| ACID VALUE (mg KOH/g) | - | |
| SOLUBILITY | INSOLUBLE IN WATER | |
| VAPOUR PRESSURE | < 0,001 hPa (20°C) | |
| OTHER SOLUBILITIES | SOLUBLE IN ETHANOL. INSOLUBLE IN PROPYLENEGLYCOL. SOLUBLE IN OILS AND FATS. | |

OTHER TECHNICAL DATA

STABILITY AND STORAGE

KEEP IN TIGHTLY CLOSED CONTAINER IN A COOL AND DRY PLACE, PROTECTED FROM LIGHT. WHEN STORED FOR MORE THAN 24 MONTHS, QUALITY SHOULD BE CHECKED BEFORE USE.
 PURGE HEADSPACE WITH NITROGEN. 10-15°C. SENSITIVE TO AIR, LIGHT, HEAT AND HUMIDITY.

WE BELIEVE THE ABOVE INFORMATION TO BE CORRECT BUT WE DO NOT PRESENT IT AS ALL INCLUSIVE AND AS SUCH SHOULD BE USED AS A GUIDE. IT IS THE SOLE RESPONSIBILITY OF THE RECEIVER OF OUR PRODUCT TO COMPLY WITH EXISTING REGULATIONS AND INSTRUCTIONS.

THIS PRODUCT HAS NOT BEEN FILTERED DUE TO TECHNOLOGICAL REASONS. WE RECOMMEND NOT TO USE IT UNLESS FILTERED WHEN USED AS A RAW MATERIAL IN FOOD INTENDED FOR FINAL CONSUMERS.