

SPECIFICATION SHEET

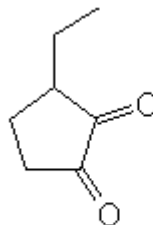
VERSION 2,00 **VERSION DATE** 19/09/22 **PRINT DATE** 17/05/24

PRODUCT ETHYL CYCLOPENTENOLONE 50% PG BESTALLY
APPLICATIONS Industrial raw material not intended for direct use.
IUPAC NAME 3-ETHYL-2-CYCLOPENTEN-2-OL-1-ONE 50% PROPYLENE GLYCOL
SYNONYMS 3-ETHYLCYCLOPENTAN-1,2-DIONE 50% PG

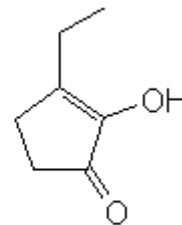
FORMULA C7 H10 O2
MOLECULAR WEIGHT 126,15
CAS 21835-01-8

EINECS 244-606-5

FEMA 3152
TARIFF NUMBER 3302909000



DIKETONE FORM



ENOL FORM

FOOD GRADE CERTIFICATE AVAILABLE ON REQUEST
REACH REGISTRATION NO. On request. REACH and non-REACH material available for this product.

SPECIFICATIONS

ASPECT AT 20°C	VISCOUS LIQUID
COLOUR	COLORLESS TO PALE YELLOW
ODOUR	MAPLE, CARAMEL, COFFEE, SMOKE
TASTE	
DENSITY AT 20°C (g / ml)	1,052 - 1,073
DENSITY 25/25	1,050 - 1,070
REFRACTIVE INDEX nD20	1,4500 - 1,4800
REFRACTIVE INDEX nD25	-
OPTICAL ROTATION (°)	/
BOILING POINT (°C)	-
MELTING POINT (°C)	-
FLASH POINT (°C)	101,00
ASSAY (% GC)	50-62%
ACID VALUE (mg KOH/g)	-
SOLUBILITY	SOLUBLE IN WATER
VAPOUR PRESSURE	NOT DETERMINED
OTHER SOLUBILITIES	SOLUBLE IN ETHANOL. SOLUBLE IN PROPYLENEGLYCOL.

OTHER TECHNICAL DATA KEEP AWAY FROM MOISTURE AND SUNLIGHT.

STABILITY AND STORAGE

KEEP IN TIGHTLY CLOSED CONTAINER IN A COOL AND DRY PLACE, PROTECTED FROM LIGHT. WHEN STORED FOR MORE THAN 12 MONTHS, QUALITY SHOULD BE CHECKED BEFORE USE.
 STORE AT 15-25°C. IT CONTAINS 50% PROPYLENE GLYCOL (E1520). PURGE HEADSPACE WITH NITROGEN.

WE BELIEVE THE ABOVE INFORMATION TO BE CORRECT BUT WE DO NOT PRESENT IT AS ALL INCLUSIVE AND AS SUCH SHOULD BE USED AS A GUIDE.
 IT IS THE SOLE RESPONSIBILITY OF THE RECEIVER OF OUR PRODUCT TO COMPLY WITH EXISTING REGULATIONS AND INSTRUCTIONS.

THIS PRODUCT HAS NOT BEEN FILTERED DUE TO TECHNICAL REASONS. WE RECOMMEND NOT TO USE IT UNLESS FILTERED WHEN USED AS A RAW MATERIAL IN FOOD INTENDED FOR FINAL CONSUMERS.