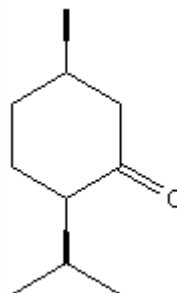


SPECIFICATION SHEET

VERSION	3,00	VERSION DATE	19/09/22	PRINT DATE	19/05/24
PRODUCT	ISOMENTHONE				
APPLICATIONS	Industrial raw material not intended for direct use.				
IUPAC NAME	5-METHYL-2-(1-METHYL-ETHYL)-CICLOHEXANONE				
SYNONYMS	5-METHYL-2-(1-METHYL-ETHYL)-CICLOHEXANONE				
PLANT OF ORIGIN	Mentha arvensis				
PART OF THE PLANT	MINT OIL				
FORMULA	C ₁₀ H ₁₈ O				
MOLECULAR WEIGHT	154,30				
CAS	491-07-6				
CAS 2	36977-92-1				
EINECS	207-727-4				
EINECS 2	253-295-5				
FEMA	3460, 2667				
TARIFF NUMBER	2914290090				
FOOD GRADE CERTIFICATE	AVAILABLE ON REQUEST				
REACH REGISTRATION NO.	On request. REACH and non-REACH material available for this product.				



SPECIFICATIONS

ASPECT AT 20°C	MOBILE LIQUID	
COLOUR	COLORLESS	
ODOUR	REFRESHING, MINTY	
TASTE		
DENSITY AT 20°C (g / ml)	0,895	- 0,905
DENSITY 25/25	-	
REFRACTIVE INDEX n_D20	1,4500	- 1,4550
REFRACTIVE INDEX n_D25	-	
OPTICAL ROTATION (°)	/	
BOILING POINT (°C)		
MELTING POINT (°C)		
FLASH POINT (°C)	87,00	
ASSAY (% GC)	ISOMENTHONE >85%; MENTHONE 4-10%; SUM >95%	
ACID VALUE (mg KOH/g)	< 1	
SOLUBILITY	INSOLUBLE IN WATER	
VAPOUR PRESSURE	NOT DETERMINED	
OTHER SOLUBILITIES	SOLUBLE IN ETHANOL	

OTHER TECHNICAL DATA

STABILITY AND STORAGE

KEEP IN TIGHTLY CLOSED CONTAINER IN A COOL AND DRY PLACE, PROTECTED FROM LIGHT. WHEN STORED FOR MORE THAN 24 MONTHS, QUALITY SHOULD BE CHECKED BEFORE USE.

WE BELIEVE THE ABOVE INFORMATION TO BE CORRECT BUT WE DO NOT PRESENT IT AS ALL INCLUSIVE AND AS SUCH SHOULD BE USED AS A GUIDE. IT IS THE SOLE RESPONSIBILITY OF THE RECEIVER OF OUR PRODUCT TO COMPLY WITH EXISTING REGULATIONS AND INSTRUCTIONS.

THIS PRODUCT HAS NOT BEEN FILTERED DUE TO TECHNICAL REASONS. WE RECOMMEND NOT TO USE IT UNLESS FILTERED WHEN USED AS A RAW MATERIAL IN FOOD INTENDED FOR FINAL CONSUMERS.