

SPECIFICATION SHEET

VERSION 2,00 **VERSION DATE** 19/09/22 **PRINT DATE** 19/05/24

PRODUCT METHYL CYCLOPENTENOLONE HYDRATE NATURAL EU BESTALLY

APPLICATIONS Industrial raw material not intended for direct use.

IUPAC NAME 2-HYDROXY-3-METHYL-2-CYCLOPENTENONE MONOHYDRATE

SYNONYMS CYCLOTENE, CORYLONE, KETONAROME, MAPLE LACTONE

PLANT OF ORIGIN

PART OF THE PLANT

FORMULA C₆ H₈ O₂ · H₂O

MOLECULAR WEIGHT 130,15

CAS 80-71-7

CAS 2 765-70-8

EINECS 201-303-2

EINECS 2 212-154-8

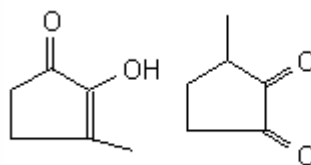
FEMA 2700

TARIFF NUMBER 2914409090

KOSHER CERTIFICATE AVAILABLE ON REQUEST

FOOD GRADE CERTIFICATE AVAILABLE ON REQUEST

REACH REGISTRATION NO. Exempt from registration (according to article 2.5 of REACH)



ENOL FORM DIKETONE FORM

SPECIFICATIONS

ASPECT AT 20°C	CRYSTALLINE POWDER
COLOUR	WHITE - BEIGE
ODOUR	CARAMEL, SWEET, MAPLE, LICORICE, NUTTY
TASTE	SWEET
DENSITY AT 20°C (g / ml)	-
DENSITY 25/25	-
REFRACTIVE INDEX n_D20	-
REFRACTIVE INDEX n_D25	-
OPTICAL ROTATION (°)	/
BOILING POINT (°C)	-
MELTING POINT (°C)	70 - 78
FLASH POINT (°C)	110,00
ASSAY (% GC)	MCP HYDRATE >96%; MCP 82-86%; WATER 14-18%
ACID VALUE (mg KOH/g)	-
SOLUBILITY	SOLUBLE 1 g IN 72 mL OF WATER
VAPOUR PRESSURE	NOT DETERMINED
OTHER SOLUBILITIES	SOLUBLE 1 g IN 5 mL OF ETHANOL 90%. SOLUBLE IN PROPYLENGLYCOL
OTHER TECHNICAL DATA	HYDRATED QUALITY.

STABILITY AND STORAGE

KEEP IN TIGHTLY CLOSED CONTAINER IN A COOL AND DRY PLACE, PROTECTED FROM LIGHT. WHEN STORED FOR MORE THAN 24 MONTHS, QUALITY SHOULD BE CHECKED BEFORE USE.

WE BELIEVE THE ABOVE INFORMATION TO BE CORRECT BUT WE DO NOT PRESENT IT AS ALL INCLUSIVE AND AS SUCH SHOULD BE USED AS A GUIDE. IT IS THE SOLE RESPONSIBILITY OF THE RECEIVER OF OUR PRODUCT TO COMPLY WITH EXISTING REGULATIONS AND INSTRUCTIONS.

THIS PRODUCT HAS NOT BEEN FILTERED DUE TO TECHNOLOGICAL REASONS. WE RECOMMEND NOT TO USE IT UNLESS FILTERED WHEN USED AS A RAW MATERIAL IN FOOD INTENDED FOR FINAL CONSUMERS.