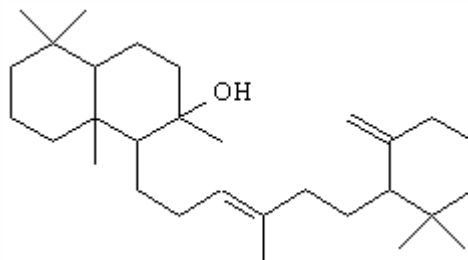


## SPECIFICATION SHEET

<b>VERSION</b>	3,00	<b>VERSION DATE</b>	31/01/23	<b>PRINT DATE</b>	02/05/24
<b>PRODUCT</b>	AMBRAIN NATURAL IFF				
<b>APPLICATIONS</b>	Industrial raw material not intended for direct use.				
<b>IUPAC NAME</b>	LABDANUM EXTRACT				
<b>SYNONYMS</b>	AMBREINE, LABDANUM GUM EXTRACT				
<b>PLANT OF ORIGIN</b>	Cistus ladaniferus				
<b>PART OF THE PLANT</b>	RESIN				
<b>FORMULA</b>	C <sub>30</sub> H <sub>52</sub> O				
<b>MOLECULAR WEIGHT</b>	428,40				
<b>CAS</b>	89997-74-0				
<b>CAS 2</b>	8016-26-0				
<b>EINECS</b>	289-711-7				
<b>EINECS 2</b>	283-893-1				
<b>TARIFF NUMBER</b>	3301300000				



**REACH REGISTRATION NO.** Exempt from registration (imported/manufactured < 1 ton/year)

## SPECIFICATIONS

<b>ASPECT AT 20°C</b>	SEMISOLID MASS	
<b>COLOUR</b>	DARK YELLOW TO BROWN	
<b>ODOUR</b>	LABDANUM, SWEET, BALSAMIC, HERBAL	
<b>TASTE</b>		
<b>DENSITY AT 20°C (g / ml)</b>	-	
<b>DENSITY 25/25</b>	-	
<b>REFRACTIVE INDEX n<sub>D</sub>20</b>	1,5000	- 1,5100
<b>REFRACTIVE INDEX n<sub>D</sub>25</b>	-	
<b>OPTICAL ROTATION (°)</b>	/	
<b>BOILING POINT (°C)</b>	-	
<b>MELTING POINT (°C)</b>	-	
<b>FLASH POINT (°C)</b>	77,00	
<b>ASSAY (% GC)</b>	-	
<b>ACID VALUE (mg KOH/g)</b>		
<b>SOLUBILITY</b>	SOLUBLE IN ETHANOL	
<b>VAPOUR PRESSURE</b>	0,0007 calculated (kPa)	
<b>OTHER SOLUBILITIES</b>	SOLUBLE IN ETHANOL	

## OTHER TECHNICAL DATA

## STABILITY AND STORAGE

KEEP IN TIGHTLY CLOSED CONTAINER IN A COOL AND DRY PLACE, PROTECTED FROM LIGHT. WHEN STORED FOR MORE THAN 24 MONTHS, QUALITY SHOULD BE CHECKED BEFORE USE.

WE BELIEVE THE ABOVE INFORMATION TO BE CORRECT BUT WE DO NOT PRESENT IT AS ALL INCLUSIVE AND AS SUCH SHOULD BE USED AS A GUIDE. IT IS THE SOLE RESPONSIBILITY OF THE RECEIVER OF OUR PRODUCT TO COMPLY WITH EXISTING REGULATIONS AND INSTRUCTIONS.