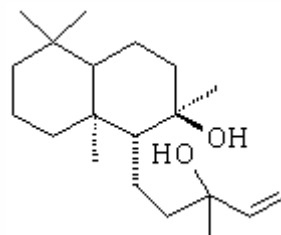


SPECIFICATION SHEET

VERSION	3,00	VERSION DATE	19/09/22	PRINT DATE	07/05/24
PRODUCT	SCLAREOL NATURAL				
APPLICATIONS	Industrial raw material not intended for direct use.				
IUPAC NAME	SCLAREOL				
SYNONYMS					
PLANT OF ORIGIN	Salvia sclarea				
PART OF THE PLANT	CONCRETE OF CLARY SAGE				
FORMULA	C20 H36 O2				
MOLECULAR WEIGHT	308,50				
CAS	515-03-7				
EINECS	208-194-0				
FEMA	4502				
TARIFF NUMBER	2906190090				



REACH REGISTRATION NO. Exempt from registration (imported/manufactured < 1 ton/year)

SPECIFICATIONS

ASPECT AT 20°C	SOLID (POWDER)
COLOUR	WHITE
ODOUR	NEARLY ODORLESS
TASTE	
DENSITY AT 20°C (g / ml)	-
DENSITY 25/25	-
REFRACTIVE INDEX nD20	-
REFRACTIVE INDEX nD25	-
OPTICAL ROTATION (°)	/
BOILING POINT (°C)	-
MELTING POINT (°C)	100 - 104
FLASH POINT (°C)	101,00
ASSAY (% GC)	> 98; ACETONE < 0,5
ACID VALUE (mg KOH/g)	
SOLUBILITY	INSOLUBLE IN WATER.
VAPOUR PRESSURE	NOT DETERMINED
OTHER SOLUBILITIES	MODERATELY SOLUBLE IN ETHANOL.

OTHER TECHNICAL DATA

STABILITY AND STORAGE

KEEP IN TIGHTLY CLOSED CONTAINER IN A COOL AND DRY PLACE, PROTECTED FROM LIGHT. WHEN STORED FOR MORE THAN 24 MONTHS, QUALITY SHOULD BE CHECKED BEFORE USE.

WE BELIEVE THE ABOVE INFORMATION TO BE CORRECT BUT WE DO NOT PRESENT IT AS ALL INCLUSIVE AND AS SUCH SHOULD BE USED AS A GUIDE. IT IS THE SOLE RESPONSIBILITY OF THE RECEIVER OF OUR PRODUCT TO COMPLY WITH EXISTING REGULATIONS AND INSTRUCTIONS.