

SPECIFICATION SHEET

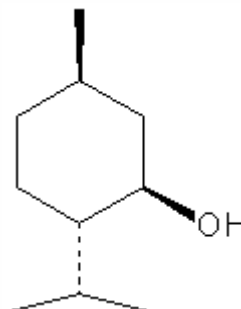
VERSION 2,00 **VERSION DATE** 19/09/22 **PRINT DATE** 19/05/24

PRODUCT MENTHOL-L BASF SOLID MASS
APPLICATIONS Industrial raw material not intended for direct use.
IUPAC NAME 5-METHYL-2-ISOPROPYL CYCLOHEXANOL
SYNONYMS P-MENTHAN-3-OL, L-MENTHOL

FORMULA C10 H20 O
MOLECULAR WEIGHT 156,30
CAS 2216-51-5
CAS 2 89-78-1
EINECS 218-690-9

FEMA 2665
TARIFF NUMBER 2906110000

FOOD GRADE CERTIFICATE AVAILABLE ON REQUEST
REACH REGISTRATION NO. 01-2119456815-30



SPECIFICATIONS

ASPECT AT 20°C	SOLID MASS
COLOUR	WHITE
ODOUR	MINTY, FRESH
TASTE	COOL, FRESH, PEPPERMINT
DENSITY AT 20°C (g / ml)	-
DENSITY 25/25	-
REFRACTIVE INDEX nD20	-
REFRACTIVE INDEX nD25	-
OPTICAL ROTATION (°)	-51,00 / -45,00
BOILING POINT (°C)	216°C (1013 mbar)
MELTING POINT (°C)	41 - 44
FLASH POINT (°C)	96,00
ASSAY (% GC)	> 99,7
ACID VALUE (mg KOH/g)	-
SOLUBILITY	SLIGHTLY SOLUBLE IN WATER (APPROX. 0,05% 20°C)
VAPOUR PRESSURE	0,085 hPa (25°C)
OTHER SOLUBILITIES	SOLUBLE IN ETHANOL

OTHER TECHNICAL DATA Rotation value is the specific rotation

STABILITY AND STORAGE

KEEP IN TIGHTLY CLOSED CONTAINER IN A COOL AND DRY PLACE, PROTECTED FROM LIGHT. WHEN STORED FOR MORE THAN 24 MONTHS, QUALITY SHOULD BE CHECKED BEFORE USE.
 ASSURE COMPLETE MELTING BEFORE USE.

WE BELIEVE THE ABOVE INFORMATION TO BE CORRECT BUT WE DO NOT PRESENT IT AS ALL INCLUSIVE AND AS SUCH SHOULD BE USED AS A GUIDE.
 IT IS THE SOLE RESPONSIBILITY OF THE RECEIVER OF OUR PRODUCT TO COMPLY WITH EXISTING REGULATIONS AND INSTRUCTIONS.

THIS PRODUCT HAS NOT BEEN FILTERED DUE TO TECHNOLOGICAL REASONS. WE RECOMMEND NOT TO USE IT UNLESS FILTERED WHEN USED AS A RAW MATERIAL IN FOOD INTENDED FOR FINAL CONSUMERS.