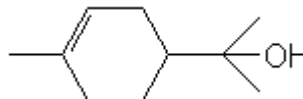


SPECIFICATION SHEET

VERSION 2,00 **VERSION DATE** 06/03/23 **PRINT DATE** 05/05/24

PRODUCT TERPINEOL EXTRA
APPLICATIONS Industrial raw material not intended for direct use.
IUPAC NAME 1-METHYL-4-ISOPROPYL-1-CYCLOHEXEN-8-OL
SYNONYMS ALFA TERPINEOL

FORMULA C10 H18 O
MOLECULAR WEIGHT 154,00
CAS 8000-41-7
CAS 2 98-55-5
EINECS 232-268-1
EINECS 2 202-680-6



TARIFF NUMBER 2906190090

REACH REGISTRATION NO. On request. REACH and non-REACH material available for this product.

SPECIFICATIONS

| | |
|---------------------------------|----------------------------------------------------|
| ASPECT AT 20°C | CLEAR VISCOUS LIQUID |
| COLOUR | COLORLESS |
| ODOUR | LILAC |
| TASTE | DILUIDO A MELOCOTON |
| DENSITY AT 20°C (g / ml) | 0,930 - 0,937 |
| DENSITY 25/25 | - |
| REFRACTIVE INDEX nD20 | 1,4800 - 1,4850 |
| REFRACTIVE INDEX nD25 | - |
| OPTICAL ROTATION (°) | / |
| BOILING POINT (°C) | - |
| MELTING POINT (°C) | CA. 3 |
| FLASH POINT (°C) | 91,00 |
| ASSAY (% GC) | CISBETA:4-9;ALPHA:60-70;GAMMA:18-25;ALPHA+GAMMA>85 |
| ACID VALUE (mg KOH/g) | - |
| SOLUBILITY | NEARLY INSOLUBLE IN WATER |
| VAPOUR PRESSURE | 0,04 mm Hg (20°C);1 (52,8°C) |
| OTHER SOLUBILITIES | SOLUBLE IN ETHANOL |

OTHER TECHNICAL DATA SUM OF ISOMERS (ALPHA+GAMMA+CIS-BETA+TRANS-BETA+DELTA)>95%

STABILITY AND STORAGE

KEEP IN TIGHTLY CLOSED CONTAINER IN A COOL AND DRY PLACE, PROTECTED FROM LIGHT. WHEN STORED FOR MORE THAN 24 MONTHS, QUALITY SHOULD BE CHECKED BEFORE USE.

WE BELIEVE THE ABOVE INFORMATION TO BE CORRECT BUT WE DO NOT PRESENT IT AS ALL INCLUSIVE AND AS SUCH SHOULD BE USED AS A GUIDE. IT IS THE SOLE RESPONSIBILITY OF THE RECEIVER OF OUR PRODUCT TO COMPLY WITH EXISTING REGULATIONS AND INSTRUCTIONS.

THIS PRODUCT HAS NOT BEEN FILTERED DUE TO TECHNICAL REASONS. WE RECOMMEND NOT TO USE IT UNLESS FILTERED WHEN USED AS A RAW MATERIAL IN FOOD INTENDED FOR FINAL CONSUMERS.