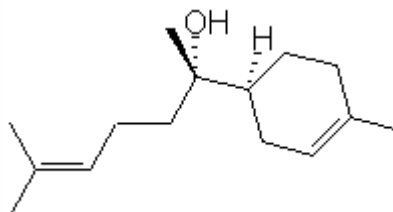


## SPECIFICATION SHEET

**VERSION** 2,00 **VERSION DATE** 19/09/22 **PRINT DATE** 19/05/24

**PRODUCT** BISABOLOL ALPHA NATURAL  
**APPLICATIONS** Industrial raw material not intended for direct use.  
**IUPAC NAME** ALPHA-BISABOLOL  
**SYNONYMS** L-(-)-ALPHA-BISABOLOL

**PLANT OF ORIGIN** Vanillomospsis erythropappa(Eremanthus erythropp.)  
**PART OF THE PLANT** WOOD, "CANDEIA" OIL ("VIROLA OLEIFERA")  
**FORMULA** C15 H26 O  
**MOLECULAR WEIGHT** 222,00  
**CAS** 515-69-5  
**CAS 2** 23089-26-1  
**EINECS** 208-205-9  
**EINECS 2** 245-423-3  
**FEMA** -  
**TARIFF NUMBER** 2906190090  
**KOSHER CERTIFICATE** AVAILABLE ON REQUEST



**REACH REGISTRATION NO.** Exempt from registration (imported/manufactured < 1 ton/year)

## SPECIFICATIONS

<b>ASPECT AT 20°C</b>	VISCOUS LIQUID	
<b>COLOUR</b>	COLORLESS TO PALE YELLOW	
<b>ODOUR</b>	SWEET AND FLORAL	
<b>TASTE</b>		
<b>DENSITY AT 20°C (g / ml)</b>	0,920	- 0,935
<b>DENSITY 25/25</b>	-	
<b>REFRACTIVE INDEX nD20</b>	1,4930	- 1,4980
<b>REFRACTIVE INDEX nD25</b>	-	
<b>OPTICAL ROTATION (°)</b>	-65,00	/ -50,00
<b>BOILING POINT (°C)</b>	265°C (1 atm);126°C(702 mm Hg)	
<b>MELTING POINT (°C)</b>		
<b>FLASH POINT (°C)</b>	101,00	
<b>ASSAY (% GC)</b>	> 95	
<b>ACID VALUE (mg KOH/g)</b>	-	
<b>SOLUBILITY</b>	INSOLUBLE IN WATER	
<b>VAPOUR PRESSURE</b>	NOT DETERMINED	
<b>OTHER SOLUBILITIES</b>	SOLUBLE IN ETHANOL	

## OTHER TECHNICAL DATA

## STABILITY AND STORAGE

KEEP IN TIGHTLY CLOSED CONTAINER IN A COOL AND DRY PLACE, PROTECTED FROM LIGHT. WHEN STORED FOR MORE THAN 24 MONTHS, QUALITY SHOULD BE CHECKED BEFORE USE.

WE BELIEVE THE ABOVE INFORMATION TO BE CORRECT BUT WE DO NOT PRESENT IT AS ALL INCLUSIVE AND AS SUCH SHOULD BE USED AS A GUIDE. IT IS THE SOLE RESPONSIBILITY OF THE RECEIVER OF OUR PRODUCT TO COMPLY WITH EXISTING REGULATIONS AND INSTRUCTIONS.