

## SPECIFICATION SHEET

**VERSION** 5,00 **VERSION DATE** 30/03/23 **PRINT DATE** 19/09/24

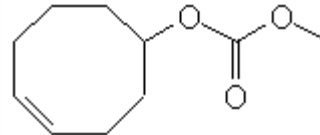
**PRODUCT** VIOLIFF IFF  
**APPLICATIONS** Industrial raw material not intended for direct use.  
**IUPAC NAME** METHOXYCARBONYLOXYCYCLOOCT-4-ENE  
**SYNONYMS** VIOLET T

**FORMULA** C10 H16 O3  
**MOLECULAR WEIGHT** 184,20  
**CAS** 87731-18-8

**EINECS** 401-620-8

**TARIFF NUMBER** 2920901090  
**KOSHER CERTIFICATE** AVAILABLE ON REQUEST

**REACH REGISTRATION NO.** 01-0000015147-73, 01-2120058008-60



### SPECIFICATIONS

<b>ASPECT AT 20°C</b>	CLEAR MOBILE LIQUID
<b>COLOUR</b>	COLORLESS TO PALE YELLOW
<b>ODOUR</b>	FLORAL, VIOLET, BANANA
<b>TASTE</b>	
<b>DENSITY AT 20°C (g / ml)</b>	1,056 - 1,064
<b>DENSITY 25/25</b>	1,055 - 1,063
<b>REFRACTIVE INDEX nD20</b>	1,4630 - 1,4690
<b>REFRACTIVE INDEX nD25</b>	-
<b>OPTICAL ROTATION (°)</b>	/
<b>BOILING POINT (°C)</b>	-
<b>MELTING POINT (°C)</b>	-
<b>FLASH POINT (°C)</b>	94,00
<b>ASSAY (% GC)</b>	MAIN PEAK 65-75%
<b>ACID VALUE (mg KOH/g)</b>	
<b>SOLUBILITY</b>	INSOLUBLE IN WATER; SOLUBLE IN ETHANOL
<b>VAPOUR PRESSURE</b>	NOT DETERMINED
<b>OTHER SOLUBILITIES</b>	SOLUBLE IN ETHANOL

**OTHER TECHNICAL DATA** Peak 1 1-8%; Peak 2 7-20%; Peak 3 <7%; Peak 5 4-10%

### STABILITY AND STORAGE

KEEP IN TIGHTLY CLOSED CONTAINER IN A COOL AND DRY PLACE, PROTECTED FROM LIGHT. WHEN STORED FOR MORE THAN 24 MONTHS, QUALITY SHOULD BE CHECKED BEFORE USE.  
IT CONTAINS 0,1% OF TOCOPHEROL

WE BELIEVE THE ABOVE INFORMATION TO BE CORRECT BUT WE DO NOT PRESENT IT AS ALL INCLUSIVE AND AS SUCH SHOULD BE USED AS A GUIDE.  
IT IS THE SOLE RESPONSIBILITY OF THE RECEIVER OF OUR PRODUCT TO COMPLY WITH EXISTING REGULATIONS AND INSTRUCTIONS.