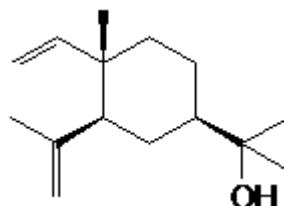


SPECIFICATION SHEET

VERSION	8,00	VERSION DATE	19/09/22	PRINT DATE	19/05/24
PRODUCT	ELEMOL OIL NATURAL (EX-ELEMI)				
APPLICATIONS	Industrial raw material not intended for direct use.				
IUPAC NAME	ELEMOL				
SYNONYMS					
PLANT OF ORIGIN	Canarium commune/Elemi gum				
PART OF THE PLANT	RECTIFICATION OF ELEMI OIL				
FORMULA	C ₁₅ H ₂₆ O				
MOLECULAR WEIGHT	222,00				
CAS	97675-63-3				
CAS 2	639-99-6				
EINECS	307-636-0				
EINECS 2	211-360-5				
FEMA	2408				
TARIFF NUMBER	3301294900				



REACH REGISTRATION NO. 01-2120770948-35

SPECIFICATIONS

ASPECT AT 20°C	MOBILE LIQUID - SOLID	
COLOUR	YELLOW-ORANGE	
ODOUR	SPICY, CITRIUS, WOODY, RESINOUS	
TASTE		
DENSITY AT 20°C (g / ml)	0,950	- 0,975
DENSITY 25/25	-	
REFRACTIVE INDEX n_D20	1,4950	- 1,5050
REFRACTIVE INDEX n_D25	-	
OPTICAL ROTATION (°)	/ 15,00	
BOILING POINT (°C)		
MELTING POINT (°C)		
FLASH POINT (°C)	80,00	
ASSAY (% GC)	ELEMOL, USUAL VALUES 40-60%	
ACID VALUE (mg KOH/g)	-	
SOLUBILITY		
VAPOUR PRESSURE	NOT DETERMINED	
OTHER SOLUBILITIES	SOLUBLE IN ETHANOL	

OTHER TECHNICAL DATA

STABILITY AND STORAGE

KEEP IN TIGHTLY CLOSED CONTAINER IN A COOL AND DRY PLACE, PROTECTED FROM LIGHT. WHEN STORED FOR MORE THAN 12 MONTHS, QUALITY SHOULD BE CHECKED BEFORE USE.

WE BELIEVE THE ABOVE INFORMATION TO BE CORRECT BUT WE DO NOT PRESENT IT AS ALL INCLUSIVE AND AS SUCH SHOULD BE USED AS A GUIDE. IT IS THE SOLE RESPONSIBILITY OF THE RECEIVER OF OUR PRODUCT TO COMPLY WITH EXISTING REGULATIONS AND INSTRUCTIONS.

THIS PRODUCT HAS NOT BEEN FILTERED DUE TO TECHNICAL REASONS. WE RECOMMEND NOT TO USE IT UNLESS FILTERED WHEN USED AS A RAW MATERIAL IN FOOD INTENDED FOR FINAL CONSUMERS.