

## SPECIFICATION SHEET

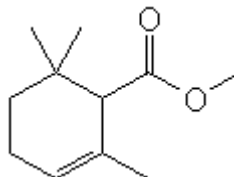
**VERSION** 1,00 **VERSION DATE** 19/09/22 **PRINT DATE** 21/12/24

**PRODUCT** METHYL CYCLOGERANIATE  
**APPLICATIONS** Industrial raw material not intended for direct use.  
**IUPAC NAME** METHYL 2,6,6-TRIMETHYL-2-CYCLOHEXENE-1-CARBOXYLATE  
**SYNONYMS**

**FORMULA** C11 H18 O2  
**MOLECULAR WEIGHT** 182,26  
**CAS** 28043-10-9

**EINECS** 248-792-9

**FEMA** -  
**TARIFF NUMBER** 2916200090



**REACH REGISTRATION NO.** 01-2120097033-60

### SPECIFICATIONS

<b>ASPECT AT 20°C</b>	CLEAR MOBILE LIQUID
<b>COLOUR</b>	COLORLESS
<b>ODOUR</b>	FLORAL,HERBAL,FRUITY,AROMATIC
<b>TASTE</b>	
<b>DENSITY AT 20°C (g / ml)</b>	0,960 - 0,966
<b>DENSITY 25/25</b>	-
<b>REFRACTIVE INDEX nD20</b>	1,4600 - 1,4640
<b>REFRACTIVE INDEX nD25</b>	-
<b>OPTICAL ROTATION (°)</b>	/
<b>BOILING POINT (°C)</b>	-
<b>MELTING POINT (°C)</b>	-
<b>FLASH POINT (°C)</b>	77,00
<b>ASSAY (% GC)</b>	>90
<b>ACID VALUE (mg KOH/g)</b>	< 1
<b>SOLUBILITY</b>	INSOLUBLE IN WATER
<b>VAPOUR PRESSURE</b>	NOT DETERMINED
<b>OTHER SOLUBILITIES</b>	SOLUBLE IN ETHANOL

### OTHER TECHNICAL DATA

A COMPLEX VERY ELEGANT AND NATURAL NOTE RECALLING PARTS OF CAMOMILE, BASIL ABSOLUTE, GENTIAN, ABSINTH AND ROSEMARY. APPLICABLE IN FLORAL, HERBAL, GREEN, FRUITY AND CHYPRE NOTES. RECOMMENDED DOSAGE 0,5-5%. IT GIVES A RICH WARM BODY.

### STABILITY AND STORAGE

KEEP IN TIGHTLY CLOSED CONTAINER IN A COOL AND DRY PLACE, PROTECTED FROM LIGHT. WHEN STORED FOR MORE THAN 24 MONTHS, QUALITY SHOULD BE CHECKED BEFORE USE.  
 IT CONTAINS 0,05% OF BHT

WE BELIEVE THE ABOVE INFORMATION TO BE CORRECT BUT WE DO NOT PRESENT IT AS ALL INCLUSIVE AND AS SUCH SHOULD BE USED AS A GUIDE. IT IS THE SOLE RESPONSIBILITY OF THE RECEIVER OF OUR PRODUCT TO COMPLY WITH EXISTING REGULATIONS AND INSTRUCTIONS.