

SPECIFICATION SHEET

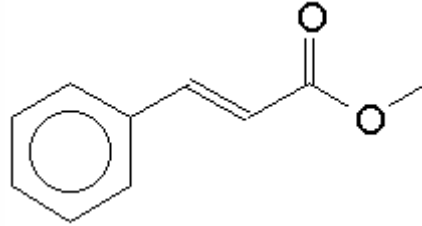
VERSION 1,00 **VERSION DATE** 19/09/22 **PRINT DATE** 16/08/24

PRODUCT METHYL CINNAMATE EX-PHENYLALANINE NATURAL EU BESTALLY
APPLICATIONS Industrial raw material not intended for direct use.
IUPAC NAME METHYL CINNAMATE
SYNONYMS

PLANT OF ORIGIN
PART OF THE PLANT FERMENTATION OF PHENYLALANINE.
FORMULA C10 H10 O2
MOLECULAR WEIGHT 162,19
CAS 103-26-4

EINECS 203-093-8

FEMA 2698
TARIFF NUMBER 2916399090
KOSHER CERTIFICATE AVAILABLE ON REQUEST
FOOD GRADE CERTIFICATE AVAILABLE ON REQUEST
REACH REGISTRATION NO. 01-2119979458-16



SPECIFICATIONS

ASPECT AT 20°C	SOLID (POWDER FORM)
COLOUR	WHITE TO SLIGHTLY YELLOW
ODOUR	FRUITY, SWEET, CHERRY, STRAWBERRY
TASTE	FRUITY, STRAWBERRY-LIKE
DENSITY AT 20°C (g / ml)	-
DENSITY 25/25	-
REFRACTIVE INDEX nD20	-
REFRACTIVE INDEX nD25	-
OPTICAL ROTATION (°)	/
BOILING POINT (°C)	260
MELTING POINT (°C)	33 - 38
FLASH POINT (°C)	113,00
ASSAY (% GC)	> 99
ACID VALUE (mg KOH/g)	< 2
SOLUBILITY	INSOLUBLE IN WATER
VAPOUR PRESSURE	NOT DETERMINED
OTHER SOLUBILITIES	SOLUBLE IN ETHANOL. SOLUBLE 1 g IN 4 mL 80% ETHANOL.

OTHER TECHNICAL DATA

STABILITY AND STORAGE

KEEP IN TIGHTLY CLOSED CONTAINER IN A COOL AND DRY PLACE, PROTECTED FROM LIGHT. WHEN STORED FOR MORE THAN 24 MONTHS, QUALITY SHOULD BE CHECKED BEFORE USE.
KEEP AT TEMPERATURES BELOW 25°C

WE BELIEVE THE ABOVE INFORMATION TO BE CORRECT BUT WE DO NOT PRESENT IT AS ALL INCLUSIVE AND AS SUCH SHOULD BE USED AS A GUIDE. IT IS THE SOLE RESPONSIBILITY OF THE RECEIVER OF OUR PRODUCT TO COMPLY WITH EXISTING REGULATIONS AND INSTRUCTIONS.

THIS PRODUCT HAS NOT BEEN FILTERED DUE TO TECHNICAL REASONS. WE RECOMMEND NOT TO USE IT UNLESS FILTERED WHEN USED AS A RAW MATERIAL IN FOOD INTENDED FOR FINAL CONSUMERS.