

## SPECIFICATION SHEET

**VERSION** 1,00      **VERSION DATE** 19/09/22      **PRINT DATE** 17/07/24

**PRODUCT** METHYL CYCLOPENTENOLONE NATURAL EU BESTALLY  
**APPLICATIONS** Industrial raw material not intended for direct use.  
**IUPAC NAME** 2-HYDROXY-3-METHYL-2-CYCLOPENTENONE  
**SYNONYMS** CYCLOTENE, CORYLONE, KETONAROME, MAPLE LACTONE

**PLANT OF ORIGIN**  
**PART OF THE PLANT**

**FORMULA** C6 H8 O2

**MOLECULAR WEIGHT** 112,00

**CAS** 80-71-7

**CAS 2** 765-70-8

**EINECS** 201-303-2

**EINECS 2** 212-154-8

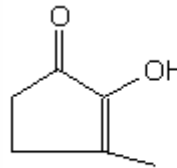
**FEMA** 2700

**TARIFF NUMBER** 2914409090

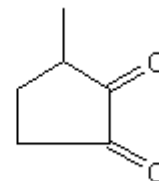
**KOSHER CERTIFICATE** AVAILABLE ON REQUEST

**FOOD GRADE CERTIFICATE** AVAILABLE ON REQUEST

**REACH REGISTRATION NO.** On request. REACH and non-REACH material available for this product.



ENOL FORM



DIKETONE FORM

## SPECIFICATIONS

**ASPECT AT 20°C** CRYSTALLINE POWDER  
**COLOUR** WHITE TO PALE YELLOW OR BEIGE  
**ODOUR** SWEET, NUTS  
**TASTE** SWEET  
**DENSITY AT 20°C (g / ml)** -  
**DENSITY 25/25** -  
**REFRACTIVE INDEX nD20** -  
**REFRACTIVE INDEX nD25** -  
**OPTICAL ROTATION (°)** /  
**BOILING POINT (°C)** -  
**MELTING POINT (°C)** 104 - 108  
**FLASH POINT (°C)** 110,00  
**ASSAY (% GC)** > 99  
**ACID VALUE (mg KOH/g)**  
**SOLUBILITY** 1 g/72 ml WATER  
**VAPOUR PRESSURE** NOT DETERMINED  
**OTHER SOLUBILITIES** 1 g/ 5 ml ETHANOL 90%

**OTHER TECHNICAL DATA** ANHYDROUS QUALITY. MAIN FORM IN THE PURE PRODUCT IS THE ENOL FORM. OBTAINED BY REACTION OF NATURAL RAW MATERIALS.

## STABILITY AND STORAGE

KEEP IN TIGHTLY CLOSED CONTAINER IN A COOL AND DRY PLACE, PROTECTED FROM LIGHT. WHEN STORED FOR MORE THAN 24 MONTHS, QUALITY SHOULD BE CHECKED BEFORE USE.

WE BELIEVE THE ABOVE INFORMATION TO BE CORRECT BUT WE DO NOT PRESENT IT AS ALL INCLUSIVE AND AS SUCH SHOULD BE USED AS A GUIDE. IT IS THE SOLE RESPONSIBILITY OF THE RECEIVER OF OUR PRODUCT TO COMPLY WITH EXISTING REGULATIONS AND INSTRUCTIONS.

THIS PRODUCT HAS NOT BEEN FILTERED DUE TO TECHNICAL REASONS. WE RECOMMEND NOT TO USE IT UNLESS FILTERED WHEN USED AS A RAW MATERIAL IN FOOD INTENDED FOR FINAL CONSUMERS.