

SPECIFICATION SHEET

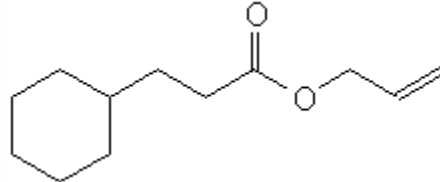
VERSION 1,00 **VERSION DATE** 19/09/22 **PRINT DATE** 17/07/24

PRODUCT ALLYL CYCLOHEXYL PROPIONATE
APPLICATIONS Industrial raw material not intended for direct use.
IUPAC NAME 2-PROPENYL CYCLOHEXYLPROPIONATE
SYNONYMS 2-PROPENYL CYCLOHEXYLPROPIONATE

FORMULA C12 H20 O2
MOLECULAR WEIGHT 196,32
CAS 2705-87-5

EINECS 220-292-5

FEMA 2026
TARIFF NUMBER 2916200090



FOOD GRADE CERTIFICATE AVAILABLE ON REQUEST
REACH REGISTRATION NO. 01-2119976355-27

SPECIFICATIONS

ASPECT AT 20°C	CLEAR MOBILE LIQUID
COLOUR	COLORLESS TO PALE YELLOW
ODOUR	STRONG, FRUITY, LIKE PINEAPPLE
TASTE	ESTERY, GREEN, FRUITY, PINEAPPLE
DENSITY AT 20°C (g / ml)	0,945 - 0,950
DENSITY 25/25	-
REFRACTIVE INDEX nD20	1,4570 - 1,4620
REFRACTIVE INDEX nD25	-
OPTICAL ROTATION (°)	/
BOILING POINT (°C)	269°C (1013 mbar)
MELTING POINT (°C)	
FLASH POINT (°C)	109,00
ASSAY (% GC)	> 98; ALLYL ALCOHOL < 0,1%
ACID VALUE (mg KOH/g)	< 1
SOLUBILITY	INSOLUBLE IN WATER
VAPOUR PRESSURE	< 1 kPa to 50°C (calculated)
OTHER SOLUBILITIES	SOLUBLE IN ETHANOL

OTHER TECHNICAL DATA

STABILITY AND STORAGE

KEEP IN TIGHTLY CLOSED CONTAINER IN A COOL AND DRY PLACE, PROTECTED FROM LIGHT. WHEN STORED FOR MORE THAN 24 MONTHS, QUALITY SHOULD BE CHECKED BEFORE USE.

WE BELIEVE THE ABOVE INFORMATION TO BE CORRECT BUT WE DO NOT PRESENT IT AS ALL INCLUSIVE AND AS SUCH SHOULD BE USED AS A GUIDE. IT IS THE SOLE RESPONSIBILITY OF THE RECEIVER OF OUR PRODUCT TO COMPLY WITH EXISTING REGULATIONS AND INSTRUCTIONS.

THIS PRODUCT HAS NOT BEEN FILTERED DUE TO TECHNICAL REASONS. WE RECOMMEND NOT TO USE IT UNLESS FILTERED WHEN USED AS A RAW MATERIAL IN FOOD INTENDED FOR FINAL CONSUMERS.