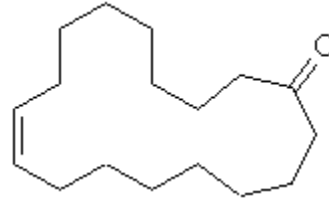


SPECIFICATION SHEET

VERSION 4,00 **VERSION DATE** 19/09/22 **PRINT DATE** 17/07/24

PRODUCT CIVETTONE
APPLICATIONS Industrial raw material not intended for direct use.
IUPAC NAME (Z)-CYCLOHEPTADEC-9-EN-1-ONE
SYNONYMS 9-CYCLOHEPTADECEN-1-ONE, (Z)-
FORMULA C17 H30 O
MOLECULAR WEIGHT 250,00
CAS 542-46-1
EINECS 208-813-4
FEMA 3425
TARIFF NUMBER 2914290090
KOSHER CERTIFICATE AVAILABLE ON REQUEST



REACH REGISTRATION NO. Exempt from registration (imported/manufactured < 1 ton/year)

SPECIFICATIONS

ASPECT AT 20°C CLEAR MOBILE LIQUID / SOLID
COLOUR COLORLESS TO PALE YELLOW
ODOUR WARM SENSOUS ANIMAL AND MUSKY NOTE
TASTE
DENSITY AT 20°C (g / ml) -
DENSITY 25/25 -
REFRACTIVE INDEX nD20 1,4850 - 1,4920
REFRACTIVE INDEX nD25 1,4830 - 1,4900
OPTICAL ROTATION (°) /
BOILING POINT (°C) -
MELTING POINT (°C) -
FLASH POINT (°C) 101,00
ASSAY (% GC) > 88
ACID VALUE (mg KOH/g) < 1
SOLUBILITY SOLUBLE IN ETHANOL 95°: 1g in 10ml
VAPOUR PRESSURE NOT DETERMINED
OTHER SOLUBILITIES SOLUBLE IN ETHANOL

OTHER TECHNICAL DATA

STABILITY AND STORAGE

KEEP IN TIGHTLY CLOSED CONTAINER IN A COOL AND DRY PLACE, PROTECTED FROM LIGHT. WHEN STORED FOR MORE THAN 24 MONTHS, QUALITY SHOULD BE CHECKED BEFORE USE.
 IT DOES NOT CONTAIN SOLVENTS NOR STABILIZERS

WE BELIEVE THE ABOVE INFORMATION TO BE CORRECT BUT WE DO NOT PRESENT IT AS ALL INCLUSIVE AND AS SUCH SHOULD BE USED AS A GUIDE.
 IT IS THE SOLE RESPONSIBILITY OF THE RECEIVER OF OUR PRODUCT TO COMPLY WITH EXISTING REGULATIONS AND INSTRUCTIONS.