

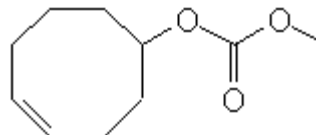
SPECIFICATION SHEET

VERSION 5,00 **VERSION DATE** 30/03/23 **PRINT DATE** 21/12/24

PRODUCT VIOLIFF IFF
APPLICATIONS Industrial raw material not intended for direct use.
IUPAC NAME METHOXYCARBONYLOXYCYCLOOCT-4-ENE
SYNONYMS VIOLET T

FORMULA C10 H16 O3
MOLECULAR WEIGHT 184,20
CAS 87731-18-8

EINECS 401-620-8



TARIFF NUMBER 2920901090
KOSHER CERTIFICATE AVAILABLE ON REQUEST

REACH REGISTRATION NO. 01-0000015147-73, 01-2120058008-60

SPECIFICATIONS

| | |
|---------------------------------|--|
| ASPECT AT 20°C | CLEAR MOBILE LIQUID |
| COLOUR | COLORLESS TO PALE YELLOW |
| ODOUR | FLORAL, VIOLET, BANANA |
| TASTE | |
| DENSITY AT 20°C (g / ml) | 1,056 - 1,064 |
| DENSITY 25/25 | 1,055 - 1,063 |
| REFRACTIVE INDEX nD20 | 1,4630 - 1,4690 |
| REFRACTIVE INDEX nD25 | - |
| OPTICAL ROTATION (°) | / |
| BOILING POINT (°C) | - |
| MELTING POINT (°C) | - |
| FLASH POINT (°C) | 94,00 |
| ASSAY (% GC) | MAIN PEAK 65-75% |
| ACID VALUE (mg KOH/g) | |
| SOLUBILITY | INSOLUBLE IN WATER; SOLUBLE IN ETHANOL |
| VAPOUR PRESSURE | NOT DETERMINED |
| OTHER SOLUBILITIES | SOLUBLE IN ETHANOL |

OTHER TECHNICAL DATA Peak 1 1-8%; Peak 2 7-20%; Peak 3 <7%; Peak 5 4-10%

STABILITY AND STORAGE

KEEP IN TIGHTLY CLOSED CONTAINER IN A COOL AND DRY PLACE, PROTECTED FROM LIGHT. WHEN STORED FOR MORE THAN 24 MONTHS, QUALITY SHOULD BE CHECKED BEFORE USE.
 IT CONTAINS 0,1% OF TOCOPHEROL

WE BELIEVE THE ABOVE INFORMATION TO BE CORRECT BUT WE DO NOT PRESENT IT AS ALL INCLUSIVE AND AS SUCH SHOULD BE USED AS A GUIDE.
 IT IS THE SOLE RESPONSIBILITY OF THE RECEIVER OF OUR PRODUCT TO COMPLY WITH EXISTING REGULATIONS AND INSTRUCTIONS.