

## SPECIFICATION SHEET

**VERSION** 3,00 **VERSION DATE** 19/09/22 **PRINT DATE** 21/12/24

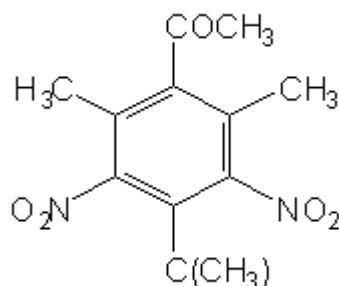
**PRODUCT** MUSK KETONE (MUSK XYLOL < 0,1%)  
**APPLICATIONS** Industrial raw material not intended for direct use.  
**IUPAC NAME** 3,5-DINITRO-2,6-DIMETHYL-4-TERTBUTYLACETOPHENONE  
**SYNONYMS** 3,5-DINITRO-2,6-DIMETHYL-4-TERT-BUTYLACETOPHENONE

**FORMULA** C14 H18 N2 O5  
**MOLECULAR WEIGHT** 294,00  
**CAS** 81-14-1

**EINECS** 201-328-9

**TARIFF NUMBER** 2914790060  
**KOSHER CERTIFICATE** AVAILABLE ON REQUEST

**REACH REGISTRATION NO.** 01-2120766629-37



## SPECIFICATIONS

|                                 |                              |
|---------------------------------|------------------------------|
| <b>ASPECT AT 20°C</b>           | CRYSTALLINE POWDER           |
| <b>COLOUR</b>                   | PALE YELLOW                  |
| <b>ODOUR</b>                    | SWEET, PERSISTENT, MUSK TYPE |
| <b>TASTE</b>                    |                              |
| <b>DENSITY AT 20°C (g / ml)</b> | -                            |
| <b>DENSITY 25/25</b>            | -                            |
| <b>REFRACTIVE INDEX nD20</b>    | -                            |
| <b>REFRACTIVE INDEX nD25</b>    | -                            |
| <b>OPTICAL ROTATION (°)</b>     | /                            |
| <b>BOILING POINT (°C)</b>       | 0                            |
| <b>MELTING POINT (°C)</b>       | 134 - 137                    |
| <b>FLASH POINT (°C)</b>         | 101,00                       |
| <b>ASSAY (% GC)</b>             | > 99 (MUSK XYLOL < 0,1)      |
| <b>ACID VALUE (mg KOH/g)</b>    | -                            |
| <b>SOLUBILITY</b>               | INSOLUBLE IN WATER           |
| <b>VAPOUR PRESSURE</b>          | NOT DETERMINED               |
| <b>OTHER SOLUBILITIES</b>       | POORLY SOLUBLE IN ETHANOL.   |

**OTHER TECHNICAL DATA** 4'-TERT-BUTYL-2',6'-DIMETHYL-3',5'-DINITROACETOPHENONE

## STABILITY AND STORAGE

KEEP IN TIGHTLY CLOSED CONTAINER IN A COOL AND DRY PLACE, PROTECTED FROM LIGHT. WHEN STORED FOR MORE THAN 24 MONTHS, QUALITY SHOULD BE CHECKED BEFORE USE.

WE BELIEVE THE ABOVE INFORMATION TO BE CORRECT BUT WE DO NOT PRESENT IT AS ALL INCLUSIVE AND AS SUCH SHOULD BE USED AS A GUIDE. IT IS THE SOLE RESPONSIBILITY OF THE RECEIVER OF OUR PRODUCT TO COMPLY WITH EXISTING REGULATIONS AND INSTRUCTIONS.