

SPECIFICATION SHEET

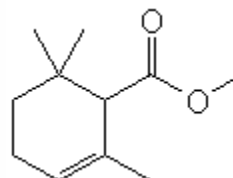
VERSION 1,00 **VERSION DATE** 19/09/22 **PRINT DATE** 18/05/24

PRODUCT METHYL CYCLOGERANIATE FIRMENICH 936915
APPLICATIONS Industrial raw material not intended for direct use.
IUPAC NAME METHYL 2,6,6-TRIMETHYL-2-CYCLOHEXENE-1-CARBOXYLATE
SYNONYMS

FORMULA C11 H18 O2
MOLECULAR WEIGHT 182,26
CAS 28043-10-9

EINECS 248-792-9

FEMA -
TARIFF NUMBER 2916200090



REACH REGISTRATION NO. 01-2120097033-60

SPECIFICATIONS

ASPECT AT 20°C	CLEAR MOBILE LIQUID	
COLOUR	COLORLESS	
ODOUR	FLORAL, HERBAL, FRUITY, AROMATIC	
TASTE		
DENSITY AT 20°C (g / ml)	0,960	- 0,966
DENSITY 25/25		-
REFRACTIVE INDEX nD20	1,4600	- 1,4640
REFRACTIVE INDEX nD25		-
OPTICAL ROTATION (°)		/
BOILING POINT (°C)	-	
MELTING POINT (°C)	-	
FLASH POINT (°C)	77,00	
ASSAY (% GC)	>90	
ACID VALUE (mg KOH/g)	< 1	
SOLUBILITY	INSOLUBLE IN WATER	
VAPOUR PRESSURE	NOT DETERMINED	
OTHER SOLUBILITIES	SOLUBLE IN ETHANOL	

OTHER TECHNICAL DATA A COMPLEX VERY ELEGANT AND NATURAL NOTE RECALLING PARTS OF CAMOMILE, BASIL ABSOLUTE, GENTIAN, ABSINTH AND ROSEMARY. APPLICABLE IN FLORAL, HERBAL, GREEN, FRUITY AND CHYPRE NOTES. RECOMMENDED DOSAGE 0,5-5%. IT GIVES A RICH WARM BODY.

STABILITY AND STORAGE

KEEP IN TIGHTLY CLOSED CONTAINER IN A COOL AND DRY PLACE, PROTECTED FROM LIGHT. WHEN STORED FOR MORE THAN 24 MONTHS, QUALITY SHOULD BE CHECKED BEFORE USE.
 IT CONTAINS 0,05% OF BHT

WE BELIEVE THE ABOVE INFORMATION TO BE CORRECT BUT WE DO NOT PRESENT IT AS ALL INCLUSIVE AND AS SUCH SHOULD BE USED AS A GUIDE.
 IT IS THE SOLE RESPONSIBILITY OF THE RECEIVER OF OUR PRODUCT TO COMPLY WITH EXISTING REGULATIONS AND INSTRUCTIONS.