

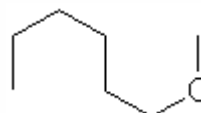
SPECIFICATION SHEET

VERSION 3,00 **VERSION DATE** 19/09/22 **PRINT DATE** 18/05/24

PRODUCT DIOLA
APPLICATIONS Industrial raw material not intended for direct use.
IUPAC NAME METHYL N-HEXYL ETHER
SYNONYMS METHYL N-HEXYL ETHER, DIOLA, 1-METHOXY-HEXANE

FORMULA C7 H16 O
MOLECULAR WEIGHT 116,20
CAS 4747-07-3

EINECS 225-263-0



TARIFF NUMBER 2909199090

REACH REGISTRATION NO. 01-2120746534-52

SPECIFICATIONS

ASPECT AT 20°C	CLEAR MOBILE LIQUID
COLOUR	COLORLESS
ODOUR	FLORAL, HERBAL, FRUITY
TASTE	
DENSITY AT 20°C (g / ml)	0,767 - 0,775
DENSITY 25/25	-
REFRACTIVE INDEX nD20	1,3950 - 1,4010
REFRACTIVE INDEX nD25	-
OPTICAL ROTATION (°)	/
BOILING POINT (°C)	-
MELTING POINT (°C)	
FLASH POINT (°C)	22,00
ASSAY (% GC)	ETHER,HEXYL METHYL>97
ACID VALUE (mg KOH/g)	-
SOLUBILITY	INSOLUBLE IN WATER
VAPOUR PRESSURE	NOT DETERMINED
OTHER SOLUBILITIES	SOLUBLE IN ETHANOL

OTHER TECHNICAL DATA

STABILITY AND STORAGE

KEEP IN TIGHTLY CLOSED CONTAINER IN A COOL AND DRY PLACE, PROTECTED FROM LIGHT. WHEN STORED FOR MORE THAN 24 MONTHS, QUALITY SHOULD BE CHECKED BEFORE USE.
IT CONTAINS 0,1% OF BHT

WE BELIEVE THE ABOVE INFORMATION TO BE CORRECT BUT WE DO NOT PRESENT IT AS ALL INCLUSIVE AND AS SUCH SHOULD BE USED AS A GUIDE.
IT IS THE SOLE RESPONSIBILITY OF THE RECEIVER OF OUR PRODUCT TO COMPLY WITH EXISTING REGULATIONS AND INSTRUCTIONS.