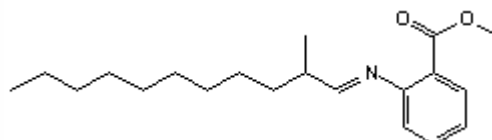


SPECIFICATION SHEET

| VERSION | 2,00 | VERSION DATE | 21/03/23 | PRINT DATE | 03/05/24 |
|-------------------------|--|--------------|----------|------------|----------|
| PRODUCT | SCHIFF BASE ALDEHYDE C12 MNA/METHYL ANTHRANILATE | | | | |
| APPLICATIONS | Industrial raw material not intended for direct use. | | | | |
| IUPAC NAME | METHYL 2-[(2-METHYLUNDECYLIDENE)AMINO]BENZOATE | | | | |
| SYNONYMS | AURANIL MNA,SCHIFF MNA,SCHIFF BASE METHYL NONYL ACETALDEHYDE/METHYL ANTHRANILATE | | | | |
| FORMULA | C20 H31 N O2 | | | | |
| MOLECULAR WEIGHT | 317,47 | | | | |
| CAS | 67800-80-0 | | | | |
| EINECS | 267-104-8 | | | | |
| TARIFF NUMBER | 2925290090 | | | | |



REACH REGISTRATION NO. Exempt from registration (imported/manufactured < 1 ton/year)

SPECIFICATIONS

| | | |
|---------------------------------|--------------------------------------|----------|
| ASPECT AT 20°C | CLEAR SEMIVISCOUS LIQUID | |
| COLOUR | YELLOW TO ORANGE | |
| ODOUR | ORANGE, GRAPEFRUIT, MANDARIN, FLORAL | |
| TASTE | | |
| DENSITY AT 20°C (g / ml) | - | |
| DENSITY 25/25 | - | |
| REFRACTIVE INDEX nD20 | 1,5430 | - 1,5530 |
| REFRACTIVE INDEX nD25 | - | |
| OPTICAL ROTATION (°) | / | |
| BOILING POINT (°C) | 435°C (1 atm) | |
| MELTING POINT (°C) | - | |
| FLASH POINT (°C) | 150,00 | |
| ASSAY (% GC) | SUM OF TWO ISOMERS > 95 | |
| ACID VALUE (mg KOH/g) | - | |
| SOLUBILITY | INSOLUBLE IN WATER | |
| VAPOUR PRESSURE | NOT DETERMINED | |
| OTHER SOLUBILITIES | SOLUBLE IN ETHANOL | |

OTHER TECHNICAL DATA SYNONYM: SCHIFF BASE 2-METHYLUNDECANAL/METHYL ANTHRANILATE. METHYL N-METHYLANTHRANILATE <0,1%.

STABILITY AND STORAGE

KEEP IN TIGHTLY CLOSED CONTAINER IN A COOL AND DRY PLACE, PROTECTED FROM LIGHT. WHEN STORED FOR MORE THAN 24 MONTHS, QUALITY SHOULD BE CHECKED BEFORE USE.
IT CONTAINS 0,07% OF TOCOPHEROL.

WE BELIEVE THE ABOVE INFORMATION TO BE CORRECT BUT WE DO NOT PRESENT IT AS ALL INCLUSIVE AND AS SUCH SHOULD BE USED AS A GUIDE. IT IS THE SOLE RESPONSIBILITY OF THE RECEIVER OF OUR PRODUCT TO COMPLY WITH EXISTING REGULATIONS AND INSTRUCTIONS.