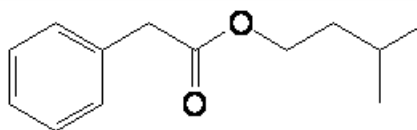


SPECIFICATION SHEET

VERSION	2,00	VERSION DATE	11/10/22	PRINT DATE	06/05/24
PRODUCT	ISOAMYL PHENYLACETATE BIONATURAL				
APPLICATIONS	Industrial raw material not intended for direct use.				
IUPAC NAME	ISOPENTYL 2-PHENYLACETATE				
SYNONYMS	ISOAMYL ALPHA-TOLUATE				
PLANT OF ORIGIN					
PART OF THE PLANT					
FORMULA	C ₁₃ H ₁₈ O ₂				
MOLECULAR WEIGHT	206,00				
CAS	102-19-2				
EINECS	203-012-6				
FEMA	2081				
TARIFF NUMBER	2916391000				



REACH REGISTRATION NO. On request. REACH and non-REACH material available for this product.

SPECIFICATIONS

ASPECT AT 20°C	CLEAR MOBILE LIQUID	
COLOUR	COLORLESS TO PALE YELLOW	
ODOUR	SWEET, TENACIOUS, MUSKY, FRUITY, BALSAM	
TASTE	BALSAMIC, COCOA, HONEY	
DENSITY AT 20°C (g / ml)	0,975	- 0,981
DENSITY 25/25	-	
REFRACTIVE INDEX n_D20	1,4820	- 1,4920
REFRACTIVE INDEX n_D25	-	
OPTICAL ROTATION (°)	/	
BOILING POINT (°C)	268°C	
MELTING POINT (°C)	-	
FLASH POINT (°C)	103,00	
ASSAY (% GC)	SUM OF ISOMERS > 98	
ACID VALUE (mg KOH/g)	< 1	
SOLUBILITY	INSOLUBLE IN WATER	
VAPOUR PRESSURE	NOT DETERMINED	
OTHER SOLUBILITIES	1:1 IN ALCOHOL 95°	
OTHER TECHNICAL DATA	MAIN ISOMER: ISOAMYL PHENYLACETATE (3-METHYLBUTYL PHENYLACETATE, 80-95% APPROX.). SECONDARY ISOMER: 2-METHYLBUTYL PHENYLACETATE (5-20% APPROX.).	

STABILITY AND STORAGE

KEEP IN TIGHTLY CLOSED CONTAINER IN A COOL AND DRY PLACE, PROTECTED FROM LIGHT. WHEN STORED FOR MORE THAN 24 MONTHS, QUALITY SHOULD BE CHECKED BEFORE USE.

WE BELIEVE THE ABOVE INFORMATION TO BE CORRECT BUT WE DO NOT PRESENT IT AS ALL INCLUSIVE AND AS SUCH SHOULD BE USED AS A GUIDE. IT IS THE SOLE RESPONSIBILITY OF THE RECEIVER OF OUR PRODUCT TO COMPLY WITH EXISTING REGULATIONS AND INSTRUCTIONS.

THIS PRODUCT HAS NOT BEEN FILTERED DUE TO TECHNICAL REASONS. WE RECOMMEND NOT TO USE IT UNLESS FILTERED WHEN USED AS A RAW MATERIAL IN FOOD INTENDED FOR FINAL CONSUMERS.