

SPECIFICATION SHEET

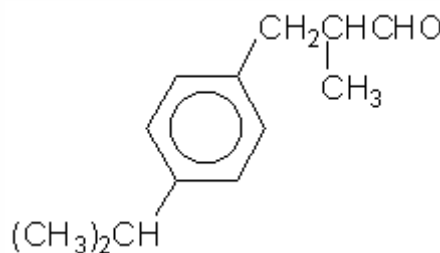
VERSION 2,00 **VERSION DATE** 11/10/22 **PRINT DATE** 19/05/24

PRODUCT CYCLAMEN ALDEHYDE
APPLICATIONS Industrial raw material not intended for direct use.
IUPAC NAME 2-METHYL-3-(PARA-ISOPROPYLPHENYL)-PROPIONALDEHYDE
SYNONYMS CICLAMAL, CYCLOSAL, CYCLAVIOL

FORMULA C13 H18 O
MOLECULAR WEIGHT 190,28
CAS 103-95-7

EINECS 203-161-7

FEMA 2743
TARIFF NUMBER 2912290090
KOSHER CERTIFICATE AVAILABLE ON REQUEST



REACH REGISTRATION NO. 01-2119970582-32

SPECIFICATIONS

ASPECT AT 20°C	CLEAR MOBILE LIQUID
COLOUR	COLORLESS TO PALE YELLOW
ODOUR	FLORAL, LILY OF THE VALLEY, CYCLAMEN
TASTE	
DENSITY AT 20°C (g / ml)	0,946 - 0,950
DENSITY 25/25	0,945 - 0,949
REFRACTIVE INDEX nD20	1,5030 - 1,5070
REFRACTIVE INDEX nD25	1,5010 - 1,5050
OPTICAL ROTATION (°)	/
BOILING POINT (°C)	270
MELTING POINT (°C)	-
FLASH POINT (°C)	75,00
ASSAY (% GC)	> 98,5; CYCLAMEN ALCOHOL < 1,5%
ACID VALUE (mg KOH/g)	< 2
SOLUBILITY	INSOLUBLE IN WATER
VAPOUR PRESSURE	0,0053 hPa (20°C)
OTHER SOLUBILITIES	SOLUBLE IN ETHANOL

OTHER TECHNICAL DATA

STABILITY AND STORAGE

KEEP IN TIGHTLY CLOSED CONTAINER IN A COOL AND DRY PLACE, PROTECTED FROM LIGHT. WHEN STORED FOR MORE THAN 12 MONTHS, QUALITY SHOULD BE CHECKED BEFORE USE.
 PURGE HEADSPACE WITH NITROGEN. CONTAINS 0,02% OF ALPHA TOCOPHEROL.

WE BELIEVE THE ABOVE INFORMATION TO BE CORRECT BUT WE DO NOT PRESENT IT AS ALL INCLUSIVE AND AS SUCH SHOULD BE USED AS A GUIDE.
 IT IS THE SOLE RESPONSIBILITY OF THE RECEIVER OF OUR PRODUCT TO COMPLY WITH EXISTING REGULATIONS AND INSTRUCTIONS.