

SPECIFICATION SHEET

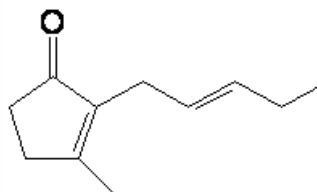
VERSION 5,00 **VERSION DATE** 19/09/22 **PRINT DATE** 17/05/24

PRODUCT CIS-JASMONE
APPLICATIONS Industrial raw material not intended for direct use.
IUPAC NAME 3-METIL-2-(2-PENTENIL)-2-CICLOPENTEN-1-ONA
SYNONYMS CIS-JASMONE; 3-METHYL-2((2Z)-PENTENYL)-2-CYCLOPENTEN-1-ONE

FORMULA C11 H16 O
MOLECULAR WEIGHT 164,25
CAS 488-10-8

EINECS 207-668-4

FEMA 3196
TARIFF NUMBER 2914290090



REACH REGISTRATION NO. 01-2120229989-35

SPECIFICATIONS

ASPECT AT 20°C	CLEAR MOBILE LIQUID
COLOUR	COLORLESS TO PALE YELLOW
ODOUR	JASMIN, CELERY, FRESH, GREEN, SPICY
TASTE	
DENSITY AT 20°C (g / ml)	0,939 - 0,943
DENSITY 25/25	0,938 - 0,942
REFRACTIVE INDEX nD20	1,4970 - 1,5010
REFRACTIVE INDEX nD25	1,4950 - 1,4990
OPTICAL ROTATION (°)	/
BOILING POINT (°C)	248°C; 135°C (12 mm Hg)
MELTING POINT (°C)	
FLASH POINT (°C)	127,00
ASSAY (% GC)	CIS > 90; CIS + TRANS > 99
ACID VALUE (mg KOH/g)	< 2
SOLUBILITY	SLIGHTLY SOLUBLE IN WATER
VAPOUR PRESSURE	0,01 mm Hg (20°C)
OTHER SOLUBILITIES	SOLUBLE IN ETHANOL

OTHER TECHNICAL DATA

STABILITY AND STORAGE

KEEP IN TIGHTLY CLOSED CONTAINER IN A COOL AND DRY PLACE, PROTECTED FROM LIGHT. WHEN STORED FOR MORE THAN 24 MONTHS, QUALITY SHOULD BE CHECKED BEFORE USE.
 IT DOES NOT CONTAIN ANTIOXIDANTS

WE BELIEVE THE ABOVE INFORMATION TO BE CORRECT BUT WE DO NOT PRESENT IT AS ALL INCLUSIVE AND AS SUCH SHOULD BE USED AS A GUIDE.
 IT IS THE SOLE RESPONSIBILITY OF THE RECEIVER OF OUR PRODUCT TO COMPLY WITH EXISTING REGULATIONS AND INSTRUCTIONS.

THIS PRODUCT HAS NOT BEEN FILTERED DUE TO TECHNICAL REASONS. WE RECOMMEND NOT TO USE IT UNLESS FILTERED WHEN USED AS A RAW MATERIAL IN FOOD INTENDED FOR FINAL CONSUMERS.