

SPECIFICATION SHEET

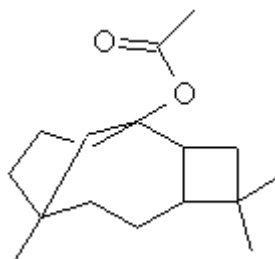
VERSION 2,00 **VERSION DATE** 10/09/24 **PRINT DATE** 30/12/24

PRODUCT CARYOPHYLLENE ACETATE
APPLICATIONS Industrial raw material not intended for direct use.
IUPAC NAME CARYOPHYLLENE ACETATE
SYNONYMS

FORMULA C17 H28 O2
MOLECULAR WEIGHT 264,41
CAS 57082-24-3

EINECS 260-555-1

FEMA -
TARIFF NUMBER 2915390090



REACH REGISTRATION NO. Exempt from registration (imported/manufactured < 1 ton/year)

SPECIFICATIONS

| | |
|---------------------------------|------------------------------------|
| ASPECT AT 20°C | CLEAR MOBILE LIQUID |
| COLOUR | PALE YELLOW TO YELLOW |
| ODOUR | WOODY, SWEET, FRUITY, SLIGHTLY DRY |
| TASTE | |
| DENSITY AT 20°C (g / ml) | 0,982 - 1,005 |
| DENSITY 25/25 | 0,980 - 0,994 |
| REFRACTIVE INDEX nD20 | 1,4920 - 1,5020 |
| REFRACTIVE INDEX nD25 | - |
| OPTICAL ROTATION (°) | / |
| BOILING POINT (°C) | - |
| MELTING POINT (°C) | - |
| FLASH POINT (°C) | 115,00 |
| ASSAY (% GC) | BETA-CARYOPHILLENE ACETATE 50% |
| ACID VALUE (mg KOH/g) | - |
| SOLUBILITY | INSOLUBLE IN WATER |
| VAPOUR PRESSURE | NOT DETERMINED |
| OTHER SOLUBILITIES | SOLUBLE IN ETHANOL 80% 1:2 |

OTHER TECHNICAL DATA

STABILITY AND STORAGE

KEEP IN TIGHTLY CLOSED CONTAINER IN A COOL AND DRY PLACE, PROTECTED FROM LIGHT. WHEN STORED FOR MORE THAN 24 MONTHS, QUALITY SHOULD BE CHECKED BEFORE USE.

WE BELIEVE THE ABOVE INFORMATION TO BE CORRECT BUT WE DO NOT PRESENT IT AS ALL INCLUSIVE AND AS SUCH SHOULD BE USED AS A GUIDE. IT IS THE SOLE RESPONSIBILITY OF THE RECEIVER OF OUR PRODUCT TO COMPLY WITH EXISTING REGULATIONS AND INSTRUCTIONS.