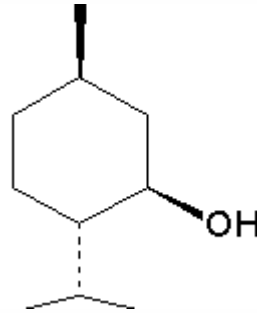


SPECIFICATION SHEET

VERSION 5,00 **VERSION DATE** 19/09/22 **PRINT DATE** 17/07/24

PRODUCT MENTHOL CRYSTALS, NATURAL
APPLICATIONS Industrial raw material not intended for direct use.
IUPAC NAME 5-METHYL-2-ISOPROYL CYCLOHEXANOL
SYNONYMS P-MENTHAN-3-OL, L-MENTHOL

PLANT OF ORIGIN Ex Mentha arvensis
PART OF THE PLANT FLOWERING TOPS
FORMULA C₁₀ H₂₀ O
MOLECULAR WEIGHT 156,00
CAS 2216-51-5
CAS 2 89-78-1
EINECS 218-690-9
EINECS 2 201-939-0
FEMA 2665
TARIFF NUMBER 2906110000



FOOD GRADE CERTIFICATE AVAILABLE ON REQUEST
REACH REGISTRATION NO. 01-2119458866-21

SPECIFICATIONS

ASPECT AT 20°C CRYSTALLINE SOLID
COLOUR COLORLESS
ODOUR COOL, MENTHOLIC
TASTE CHARACTERISTIC, REFRESHING
DENSITY AT 20°C (g / ml) 0,813 - 0,820
DENSITY 25/25 -
REFRACTIVE INDEX n_{D20} 1,3700 - 1,3750
REFRACTIVE INDEX n_{D25} -
OPTICAL ROTATION (°) -51,00 / -48,00
BOILING POINT (°C) -
MELTING POINT (°C) 41 - 44
FLASH POINT (°C) 93,00
ASSAY (% GC) L-MENTHOL > 99
ACID VALUE (mg KOH/g) -
SOLUBILITY SLIGHTLY SOLUBLE IN WATER
VAPOUR PRESSURE NOT DETERMINED
OTHER SOLUBILITIES SOLUBLE IN ETHANOL

OTHER TECHNICAL DATA VALUES OF DENSITY AND REFRACTIVE INDEX OF A DISSOLUTION OF 10% IN ETHANOL.

STABILITY AND STORAGE

KEEP IN TIGHTLY CLOSED CONTAINER IN A COOL AND DRY PLACE, PROTECTED FROM LIGHT. WHEN STORED FOR MORE THAN 36 MONTHS, QUALITY SHOULD BE CHECKED BEFORE USE.
KEEP BETWEEN 15-30°C

WE BELIEVE THE ABOVE INFORMATION TO BE CORRECT BUT WE DO NOT PRESENT IT AS ALL INCLUSIVE AND AS SUCH SHOULD BE USED AS A GUIDE. IT IS THE SOLE RESPONSIBILITY OF THE RECEIVER OF OUR PRODUCT TO COMPLY WITH EXISTING REGULATIONS AND INSTRUCTIONS.

THIS PRODUCT HAS NOT BEEN FILTERED DUE TO TECHNICAL REASONS. WE RECOMMEND NOT TO USE IT UNLESS FILTERED WHEN USED AS A RAW MATERIAL IN FOOD INTENDED FOR FINAL CONSUMERS.