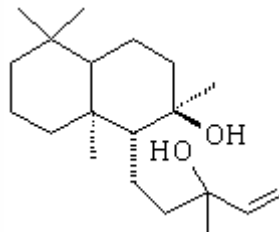


## SPECIFICATION SHEET

**VERSION** 3,00      **VERSION DATE** 19/09/22      **PRINT DATE** 17/07/24

**PRODUCT** SCLAREOL NATURAL  
**APPLICATIONS** Industrial raw material not intended for direct use.  
**IUPAC NAME** SCLAREOL  
**SYNONYMS**

**PLANT OF ORIGIN** Salvia sclarea  
**PART OF THE PLANT** CONCRETE OF CLARY SAGE  
**FORMULA** C20 H36 O2  
**MOLECULAR WEIGHT** 308,50  
**CAS** 515-03-7



**EINECS** 208-194-0

**FEMA** 4502  
**TARIFF NUMBER** 2906190090

**REACH REGISTRATION NO.** Exempt from registration (imported/manufactured < 1 ton/year)

### SPECIFICATIONS

<b>ASPECT AT 20°C</b>	SOLID (POWDER)
<b>COLOUR</b>	WHITE
<b>ODOUR</b>	NEARLY ODORLESS
<b>TASTE</b>	
<b>DENSITY AT 20°C (g / ml)</b>	-
<b>DENSITY 25/25</b>	-
<b>REFRACTIVE INDEX nD20</b>	-
<b>REFRACTIVE INDEX nD25</b>	-
<b>OPTICAL ROTATION (°)</b>	/
<b>BOILING POINT (°C)</b>	-
<b>MELTING POINT (°C)</b>	100 - 104
<b>FLASH POINT (°C)</b>	101,00
<b>ASSAY (% GC)</b>	> 98; ACETONE < 0,5
<b>ACID VALUE (mg KOH/g)</b>	
<b>SOLUBILITY</b>	INSOLUBLE IN WATER.
<b>VAPOUR PRESSURE</b>	NOT DETERMINED
<b>OTHER SOLUBILITIES</b>	MODERATELY SOLUBLE IN ETHANOL.

### OTHER TECHNICAL DATA

### STABILITY AND STORAGE

KEEP IN TIGHTLY CLOSED CONTAINER IN A COOL AND DRY PLACE, PROTECTED FROM LIGHT. WHEN STORED FOR MORE THAN 24 MONTHS, QUALITY SHOULD BE CHECKED BEFORE USE.

WE BELIEVE THE ABOVE INFORMATION TO BE CORRECT BUT WE DO NOT PRESENT IT AS ALL INCLUSIVE AND AS SUCH SHOULD BE USED AS A GUIDE. IT IS THE SOLE RESPONSIBILITY OF THE RECEIVER OF OUR PRODUCT TO COMPLY WITH EXISTING REGULATIONS AND INSTRUCTIONS.