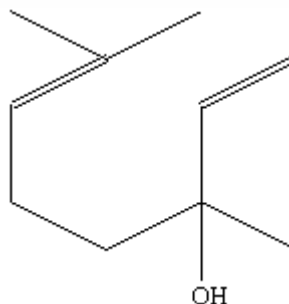


SPECIFICATION SHEET

VERSION 1,00 **VERSION DATE** 19/09/22 **PRINT DATE** 17/07/24

PRODUCT LINALOOL NATURAL (EX HO)
APPLICATIONS Industrial raw material not intended for direct use.
IUPAC NAME (R)-(-)-3,7-DIMETHYL-1,6-OCTADIEN-3-OL
SYNONYMS SHIU, R-LINALOOL, L-LINALOOL

PLANT OF ORIGIN Cinnamomum camphora L.
PART OF THE PLANT WOOD AND LEAVES
FORMULA C₁₀ H₁₈ O
MOLECULAR WEIGHT 154,00
CAS 78-70-6
CAS 2 126-91-0
EINECS 201-134-4
EINECS 2 204-811-2
FEMA 2635
TARIFF NUMBER 2905220010



FOOD GRADE CERTIFICATE AVAILABLE ON REQUEST
REACH REGISTRATION NO. On request. REACH and non-REACH material available for this product.

SPECIFICATIONS

ASPECT AT 20°C	CLEAR MOBILE LIQUID
COLOUR	COLORLESS TO PALE YELLOW
ODOUR	LIGHT, FRESH, FLORAL-WOODY
TASTE	
DENSITY AT 20°C (g / ml)	0,858 - 0,863
DENSITY 25/25	-
REFRACTIVE INDEX n_{D20}	1,4600 - 1,4640
REFRACTIVE INDEX n_{D25}	-
OPTICAL ROTATION (°)	-40,00 / -10,00
BOILING POINT (°C)	198
MELTING POINT (°C)	-
FLASH POINT (°C)	75,00
ASSAY (% GC)	L+D-LINALOOL > 98%; D-LINALOOL < 6%
ACID VALUE (mg KOH/g)	-
SOLUBILITY	1:4 v/v ETHANOL 60° - 1,45g/L IN WATER
VAPOUR PRESSURE	0,3 mbar (20°C); 2 mbar (50°C)
OTHER SOLUBILITIES	SOLUBLE IN ETHANOL
OTHER TECHNICAL DATA	PEROXIDES < 20 mmol/l.

STABILITY AND STORAGE

KEEP IN TIGHTLY CLOSED CONTAINER IN A COOL AND DRY PLACE, PROTECTED FROM LIGHT. WHEN STORED FOR MORE THAN 24 MONTHS, QUALITY SHOULD BE CHECKED BEFORE USE.
 PURGE HEADSPACE WITH NITROGEN.

WE BELIEVE THE ABOVE INFORMATION TO BE CORRECT BUT WE DO NOT PRESENT IT AS ALL INCLUSIVE AND AS SUCH SHOULD BE USED AS A GUIDE. IT IS THE SOLE RESPONSIBILITY OF THE RECEIVER OF OUR PRODUCT TO COMPLY WITH EXISTING REGULATIONS AND INSTRUCTIONS.

THIS PRODUCT HAS NOT BEEN FILTERED DUE TO TECHNICAL REASONS. WE RECOMMEND NOT TO USE IT UNLESS FILTERED WHEN USED AS A RAW MATERIAL IN FOOD INTENDED FOR FINAL CONSUMERS.