

SPECIFICATION SHEET

VERSION 1,00 **VERSION DATE** 19/09/22 **PRINT DATE** 17/07/24

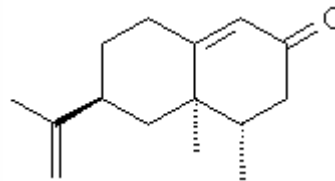
PRODUCT NOOTKATONE NATURAL 98% IFF CRYSTALS
APPLICATIONS Industrial raw material not intended for direct use.
IUPAC NAME 5,6-DIMETHYL-8-ISO-PROPENYLBICYCLO-[4.4.0]-1-DECEN-3-ONE
SYNONYMS

PLANT OF ORIGIN
PART OF THE PLANT

FORMULA C15 H22 O
MOLECULAR WEIGHT 218,33
CAS 4674-50-4

EINECS 225-124-4

FEMA 3166
TARIFF NUMBER 2914290090



FOOD GRADE CERTIFICATE AVAILABLE ON REQUEST
REACH REGISTRATION NO. Exempt from registration (imported/manufactured < 1 ton/year)

SPECIFICATIONS

ASPECT AT 20°C	CRYSTALLINE SOLID IN THE FORM OF POWDER
COLOUR	WHITE TO YELLOWISH
ODOUR	GRAPEFRUIT, CITRUS, WOODY
TASTE	
DENSITY AT 20°C (g / ml)	-
DENSITY 25/25	-
REFRACTIVE INDEX nD20	-
REFRACTIVE INDEX nD25	-
OPTICAL ROTATION (°)	184,00 / 196,00
BOILING POINT (°C)	
MELTING POINT (°C)	> 33
FLASH POINT (°C)	110,00
ASSAY (% GC)	> 98
ACID VALUE (mg KOH/g)	-
SOLUBILITY	INSOLUBLE IN WATER
VAPOUR PRESSURE	NOT DETERMINED
OTHER SOLUBILITIES	SOLUBLE IN ETHANOL

OTHER TECHNICAL DATA

STABILITY AND STORAGE

KEEP IN TIGHTLY CLOSED CONTAINER IN A COOL AND DRY PLACE, PROTECTED FROM LIGHT. WHEN STORED FOR MORE THAN 24 MONTHS, QUALITY SHOULD BE CHECKED BEFORE USE.
 KEEP REFRIGERATED. PURGE HEADSPACE WITH NITROGEN.

WE BELIEVE THE ABOVE INFORMATION TO BE CORRECT BUT WE DO NOT PRESENT IT AS ALL INCLUSIVE AND AS SUCH SHOULD BE USED AS A GUIDE. IT IS THE SOLE RESPONSIBILITY OF THE RECEIVER OF OUR PRODUCT TO COMPLY WITH EXISTING REGULATIONS AND INSTRUCTIONS.

THIS PRODUCT HAS NOT BEEN FILTERED DUE TO TECHNOLOGICAL REASONS. WE RECOMMEND NOT TO USE IT UNLESS FILTERED WHEN USED AS A RAW MATERIAL IN FOOD INTENDED FOR FINAL CONSUMERS.