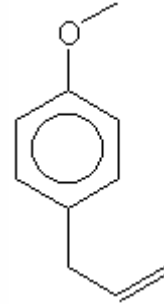


SPECIFICATION SHEET

VERSION 3,00 **VERSION DATE** 19/09/22 **PRINT DATE** 17/07/24

PRODUCT ESTRAGOLE NATURAL, EX-STAR ANISE
APPLICATIONS Industrial raw material not intended for direct use.
IUPAC NAME 1-METHOXY-4-(2-PROPENYL)-BENZENE
SYNONYMS METHYLCHAVICOL, CHAVICOL METHYL ETHER, P-METHOXYALLYL BENZENE

PLANT OF ORIGIN Illicium verum Hook. f.
PART OF THE PLANT SEEDS
FORMULA C10 H12 O
MOLECULAR WEIGHT 148,00
CAS 140-67-0



EINECS 205-427-8
FEMA 2411
TARIFF NUMBER 2909309090
KOSHER CERTIFICATE AVAILABLE ON REQUEST

REACH REGISTRATION NO. 01-2120783278-41

SPECIFICATIONS

ASPECT AT 20°C	CLEAR MOBILE LIQUID
COLOUR	COLORLESS TO PALE YELLOW
ODOUR	REMINISCENT OF ANISE
TASTE	SWEET
DENSITY AT 20°C (g / ml)	0,955 - 0,975
DENSITY 25/25	-
REFRACTIVE INDEX nD20	1,5190 - 1,5240
REFRACTIVE INDEX nD25	-
OPTICAL ROTATION (°)	/
BOILING POINT (°C)	215 - 216
MELTING POINT (°C)	-
FLASH POINT (°C)	81,00
ASSAY (% GC)	> 98
ACID VALUE (mg KOH/g)	-
SOLUBILITY	INSOLUBLE IN WATER
VAPOUR PRESSURE	NOT DETERMINED
OTHER SOLUBILITIES	SOLUBLE IN ETHANOL

OTHER TECHNICAL DATA

STABILITY AND STORAGE

KEEP IN TIGHTLY CLOSED CONTAINER IN A COOL AND DRY PLACE, PROTECTED FROM LIGHT. WHEN STORED FOR MORE THAN 24 MONTHS, QUALITY SHOULD BE CHECKED BEFORE USE.

WE BELIEVE THE ABOVE INFORMATION TO BE CORRECT BUT WE DO NOT PRESENT IT AS ALL INCLUSIVE AND AS SUCH SHOULD BE USED AS A GUIDE. IT IS THE SOLE RESPONSIBILITY OF THE RECEIVER OF OUR PRODUCT TO COMPLY WITH EXISTING REGULATIONS AND INSTRUCTIONS.

THIS PRODUCT HAS NOT BEEN FILTERED DUE TO TECHNICAL REASONS. WE RECOMMEND NOT TO USE IT UNLESS FILTERED WHEN USED AS A RAW MATERIAL IN FOOD INTENDED FOR FINAL CONSUMERS.