

SPECIFICATION SHEET

VERSION 3,00 **VERSION DATE** 14/06/23 **PRINT DATE** 17/07/24

PRODUCT ETHYL LACTATE NATURAL EU BESTALLY
APPLICATIONS Industrial raw material not intended for direct use.
IUPAC NAME ETHYL 2-HYDROXYPROPIONATE
SYNONYMS ETHYL 2-HYDROXYPROPIONATE

PLANT OF ORIGIN
PART OF THE PLANT

FORMULA C5 H10 O3

MOLECULAR WEIGHT 118,00

CAS 687-47-8

CAS 2 97-64-3

EINECS 211-694-1

EINECS 2 202-598-0

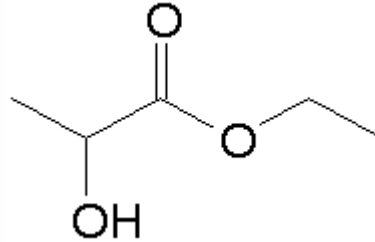
FEMA 2440

TARIFF NUMBER 2918110000

KOSHER CERTIFICATE AVAILABLE ON REQUEST

FOOD GRADE CERTIFICATE AVAILABLE ON REQUEST

REACH REGISTRATION NO. Exempt from registration (according to article 2.5 of REACH)



SPECIFICATIONS

ASPECT AT 20°C	CLEAR MOBILE LIQUID
COLOUR	COLORLESS
ODOUR	ETHEREAL-BUTTERY, CHEESY, FRUITY
TASTE	MILD, FRUITY-ETHEREAL, BUTTERY
DENSITY AT 20°C (g / ml)	1,030 - 1,038
DENSITY 25/25	1,029 - 1,037
REFRACTIVE INDEX nD20	1,4090 - 1,4160
REFRACTIVE INDEX nD25	-
OPTICAL ROTATION (°)	-11,50 / -9,50
BOILING POINT (°C)	145 - 160
MELTING POINT (°C)	-3
FLASH POINT (°C)	53,00
ASSAY (% GC)	> 99
ACID VALUE (mg KOH/g)	< 1
SOLUBILITY	MISCIBLE WITH WATER
VAPOUR PRESSURE	NOT DETERMINED
OTHER SOLUBILITIES	SOLUBLE IN ETHANOL

OTHER TECHNICAL DATA

STABILITY AND STORAGE

KEEP IN TIGHTLY CLOSED CONTAINER IN A COOL AND DRY PLACE, PROTECTED FROM LIGHT. WHEN STORED FOR MORE THAN 24 MONTHS, QUALITY SHOULD BE CHECKED BEFORE USE. PLASTIC DRUM IS RECOMMENDED.

WE BELIEVE THE ABOVE INFORMATION TO BE CORRECT BUT WE DO NOT PRESENT IT AS ALL INCLUSIVE AND AS SUCH SHOULD BE USED AS A GUIDE. IT IS THE SOLE RESPONSIBILITY OF THE RECEIVER OF OUR PRODUCT TO COMPLY WITH EXISTING REGULATIONS AND INSTRUCTIONS.

THIS PRODUCT HAS NOT BEEN FILTERED DUE TO TECHNICAL REASONS. WE RECOMMEND NOT TO USE IT UNLESS FILTERED WHEN USED AS A RAW MATERIAL IN FOOD INTENDED FOR FINAL CONSUMERS.