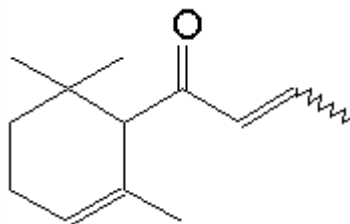


## SPECIFICATION SHEET

**VERSION** 3,00 **VERSION DATE** 09/06/20 **PRINT DATE** 01/06/24

**PRODUCT** DAMASCONE ALPHA FIRMENICH 937470  
**APPLICATIONS** Industrial raw material not intended for direct use.  
**IUPAC NAME** (E)-1-(2,6,6-TRIMETHYL-2-CYCLOHEXEN-1-YL)-2-BUTEN-1-ONE  
**SYNONYMS**

**FORMULA** C13 H20 O  
**MOLECULAR WEIGHT** 192,00  
**CAS** 24720-09-0  
**CAS 2** 43052-87-5  
**EINECS** 246-430-4  
**EINECS 2** -  
**FEMA** 4088  
**TARIFF NUMBER** 2914290090



**REACH REGISTRATION NO.** 01-2120105799-47

## SPECIFICATIONS

<b>ASPECT AT 20°C</b>	CLEAR MOBILE LIQUID	
<b>COLOUR</b>	COLORLESS TO PALE YELLOW	
<b>ODOUR</b>	DIFFUSIVE, FLORAL, ROSY, FRUITY, APPLE	
<b>TASTE</b>		
<b>DENSITY AT 20°C (g / ml)</b>	0,932	- 0,938
<b>DENSITY 25/25</b>	0,929	- 0,935
<b>REFRACTIVE INDEX nD20</b>	1,4940	- 1,4980
<b>REFRACTIVE INDEX nD25</b>	1,4920	- 1,4960
<b>OPTICAL ROTATION (°)</b>	/	
<b>BOILING POINT (°C)</b>	-	
<b>MELTING POINT (°C)</b>		
<b>FLASH POINT (°C)</b>	110,00	
<b>ASSAY (% GC)</b>	CIS 4-10%; TRANS 87-94%; SUM > 90%	
<b>ACID VALUE (mg KOH/g)</b>	< 1	
<b>SOLUBILITY</b>	SOLUBLE IN ETHANOL 95° IN ALL PROPORTIONS	
<b>VAPOUR PRESSURE</b>	NOT DETERMINED	
<b>OTHER SOLUBILITIES</b>	SOLUBLE IN ETHANOL 10% (w/v)	

## OTHER TECHNICAL DATA

## STABILITY AND STORAGE

KEEP IN TIGHTLY CLOSED CONTAINER IN A COOL AND DRY PLACE, PROTECTED FROM LIGHT. WHEN STORED FOR MORE THAN 24 MONTHS, QUALITY SHOULD BE CHECKED BEFORE USE.  
 STABILIZED WITH 0,05% DE ALPHA-TOCOPHEROL (VITAMIN E - E307)

WE BELIEVE THE ABOVE INFORMATION TO BE CORRECT BUT WE DO NOT PRESENT IT AS ALL INCLUSIVE AND AS SUCH SHOULD BE USED AS A GUIDE.  
 IT IS THE SOLE RESPONSIBILITY OF THE RECEIVER OF OUR PRODUCT TO COMPLY WITH EXISTING REGULATIONS AND INSTRUCTIONS.